

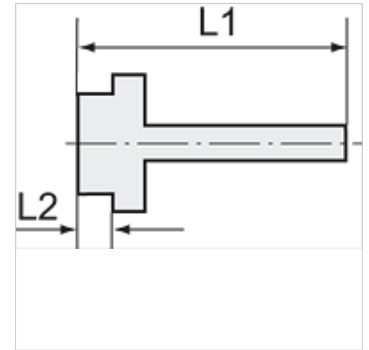
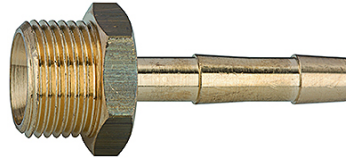
# K-TR AG 1

Male hose fittings with parallel male thread

**HANSA FLEX**

## Tulajdonságok

|                        |                                 |
|------------------------|---------------------------------|
| Munkanyomás            | 10 bar                          |
| Közeghőmérséklet       | max. +90 °C                     |
| Környezeti hőmérséklet | Max. +90 °C                     |
| Anyag                  | Brass with a bare metal surface |



## Megjegyzés

The dimensions of the standard screw fittings may change slightly during the life of the catalogue as a result of optimisation processes.  
További adatokért vegye fel a kapcsolatot.

## További információk

Further types and dimensions on request.

## Cikk

| Megnevezés     | Menet      | tömlő számára | L1<br>(mm) | L2<br>(mm) | SW (Kulcsnyílás) |
|----------------|------------|---------------|------------|------------|------------------|
| K- 07 40 13 84 | M 5        | LW 4 mm       | 15,5       | 5,0        | 7 mm             |
| K- 07 40 13 86 | G 1/8      | LW 6 mm       | 41,5       | 9,0        | 14 mm            |
| K- 07 40 49 70 | G 1/8      | LW 8 mm       | 36,0       | 7,0        | 14 mm            |
| K- 07 40 49 16 | G 1/4      | LW 8 mm       | 39,0       | 9,0        | 17 mm            |
| K- 07 40 49 20 | G 1/4      | LW 10 mm      | 39,0       | 9,0        | 17 mm            |
| K- 07 40 13 72 | G 3/8      | LW 4 mm       | 48,5       | 10,0       | 19 mm            |
| K- 07 40 13 73 | G 3/8      | LW 6 mm       | 48,5       | 10,0       | 19 mm            |
| K- 07 40 49 26 | G 3/8      | LW 8 mm       | 39,0       | 9,0        | 19 mm            |
| K- 07 40 14 02 | G 3/8 left | LW 6 mm       | 48,5       | 10,0       | 19 mm            |
| K- 07 40 49 29 | G 3/8      | LW 10 mm      | 39,0       | 9,0        | 19 mm            |
| K- 07 40 14 03 | G 3/8 left | LW 9 mm       | 48,5       | 10,0       | 19 mm            |
| K- 07 40 49 36 | G 1/2      | LW 8 mm       | 42,0       | 11,0       | 24 mm            |
| K- 07 40 49 39 | G 1/2      | LW 10 mm      | 42,0       | 11,0       | 24 mm            |
| K- 07 40 49 54 | G 3/4      | LW 25 mm      | 54,0       | 12,0       | 32 mm            |
| K- 07 40 49 56 | G 1        | LW 19 mm      | 55,0       | 13,0       | 38 mm            |
| K- 07 40 13 83 | G 1        | LW 32 mm      | 57,0       | 12,0       | 38 mm            |
| K- 07 40 49 61 | G 1 1/4    | LW 32 mm      | 61,0       | 14,0       | 50 mm            |
| K- 07 40 49 62 | G 1 1/4    | LW 38 mm      | 68,5       | 15,0       | 42 mm            |
| K- 07 40 49 63 | G 1 1/2    | LW 32 mm      | 67,0       | 15,0       | 55 mm            |
| K- 07 40 49 64 | G 1 1/2    | LW 38 mm      | 71,0       | 15,0       | 55 mm            |
| K- 07 40 49 65 | G 1 1/2    | LW 50 mm      | 71,0       | 15,0       | 55 mm            |
| K- 07 40 49 66 | G 2        | LW 50 mm      | 88,0       | 20,0       | 70 mm            |