

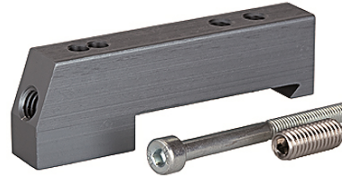
K-ADA HUTPROFIL

Adapter for DIN rail

HANSA FLEX

Tulajdonságok

Közegek	Filtered, unlubricated or lubricated compressed air. If lubrication is used, it must be continuous.
Munkanyomás	Max. vacuum 10 bar (external pilots), 3 to 7 bar (internal pilots as standard)
Vezérlőnyomás	3 - 7 bar
Hőmérséklettartomány	-10 °C to +60 °C
Átfolyt mennyiség, tömegáram	200 NI/min (Ø 4), 500 NI/min (Ø 6), 800 NI/min (Ø 8)
Vezérlések száma	Max. 16 (e.g. 16 spring return valves)
Kézi segédműködtető	Latching (bistable), Monostable (non-latching) version also available on request
teljesítményfelvétel	0.6 W per pilot
Védettség	IP 65



Megjegyzés

További adatokért vegye fel a kapcsolatot.

Leírás

These compact valve terminals, with a maximum flow rate of 800 NI/min, can be individually adapted to the specific conditions of each application thanks to the wide range of functions and various input and intermediate plates. Since each valve terminal is a customer-specific combination of a series of individual elements, the catalogue only lists the available input, intermediate and end plates as well as the different valve discs and the 25-pin multi-pole connectors.

További információk

Important: The scope of supply does not include a connector. Please order separately.

Cikk

Megnevezés	Meghatározás
K- 07 15 22 43	Adapter for DIN rail