

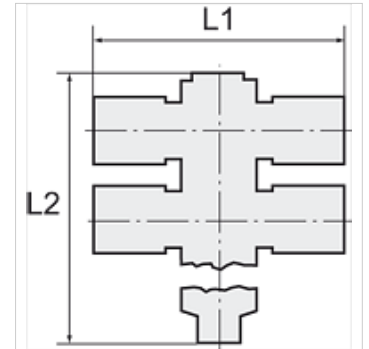
K-T-MEHRF-VERT 4 DREH 2

Multiple union elbows with inner hex, 4 outlets, swivel type, parallel male thread with O-ring

HANSA FLEX

Tulajdonságok

| | |
|-------------------|-----------------------|
| Munkanyomás | Max. 16 bar |
| Üzemi hőmérséklet | -20 °C to +80 °C |
| Anyag | Sárgaréz, nikkelezett |
| Szorítógyűrű | Hostaform |
| O-gyűrű | NBR |
| Feszítógyűrű | Stainless steel |



Megjegyzés

További adatokért vegye fel a kapcsolatot.

Leírás

The advanced version of our highly successful push-in fittings series manufactured in nickel-plated brass. Advantages of this new, optimised series: Much easier connection and disconnection of the hose, even with repeated mounting, can also be used for non-calibrated hoses, suitable for vacuum operation.

Cikk

| Megnevezés | Menet | tömlő külső Ø-höz | L1 (mm) | L2 (mm) | SW (Kulcsnyílás) |
|----------------|-------|-------------------|------------|------------|------------------|
| K- 07 40 26 64 | M 5 | 4 mm | 40,4 | 29,9 | 2 mm |
| K- 07 40 26 65 | M 5 | 6 mm | 47,0 | 29,9 | 2 mm |
| K- 07 40 26 69 | G 1/8 | 4 mm | 40,4 | 40,9 | 3 mm |
| K- 07 40 26 70 | G 1/8 | 6 mm | 46,0 | 41,1 | 3 mm |
| K- 07 40 26 71 | G 1/8 | 8 mm | 49,6 | 41,1 | 3 mm |
| K- 07 40 26 67 | G 1/4 | 6 mm | 49,0 | 47,0 | 4 mm |
| K- 07 40 26 68 | G 1/4 | 8 mm | 53,0 | 47,0 | 4 mm |
| K- 07 40 26 66 | G 1/4 | 10 mm | 62,8 | 47,0 | 4 mm |