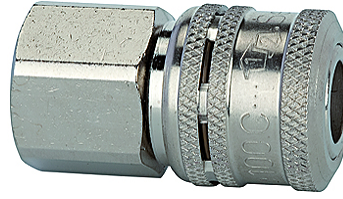


# K-LKM S NW7,2 IG

Safety couplings DN 7.2, female

## Tulajdonságok

Üzemi nyomás	0 - 35 bar, maximum static working pressure (non-pulsating)
Levegő átláramlás	1.100 l/min (at $\Delta p = 0.5$ bar)
Közeghőmérséklet	-30 °C to +100 °C
Ház, hüvely, szeleptest	Nickel-plated brass
Rugók, golyók	Stainless-steel
Tömítő anyag	NBR



## Megjegyzés

További adatokért vegye fel a kapcsolatot.

## Leírás

One-hand safety coupling with double locking mechanism. Connection: Similar to standard couplings, simply by pressing the plug into the coupling. Disconnection: The first locking mechanism is accessible when the sleeve is pushed back. The coupling valve closes. Air can then be relieved from the plug side (hose). The second locking mechanism is released by actuating the unlocking sleeve again. The coupling can now be disconnected.

## Cikk

Megnevezés	Csatlakozás	Hossz (mm)	SW (mm)
K- 07 35 02 95	G 1/4 female	46,0	22
K- 07 35 02 96	G 3/8 female	46,0	22
K- 07 35 02 97	G 1/2 female	49,0	24

## Kiegészítő elemek

K-NIPPEL KUPPL NW7 AG VZ	Plugs for couplings DN 7.2 - DN 7.8, hardened, galvanised steel, male
K-NIPPEL KUPPL NW7 IG VZ 1	Plugs for couplings DN 7.2 - DN 7.8, hardened and galvanised steel, female
K-TUE 7,2 7,8 ST VZ 1	Stems for couplings DN 7.2 - DN 7.8, hardened, galvanised steel,