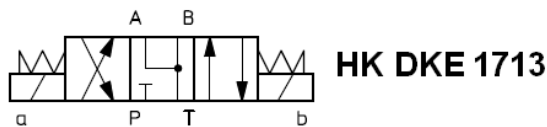
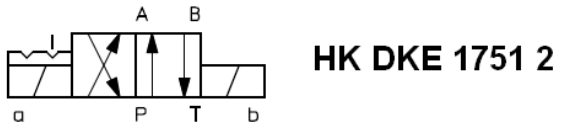
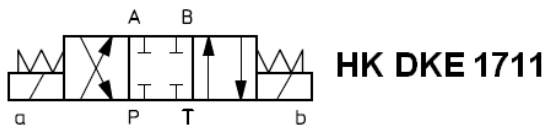
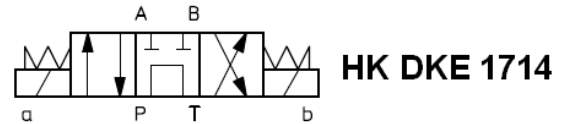
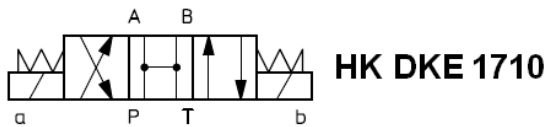
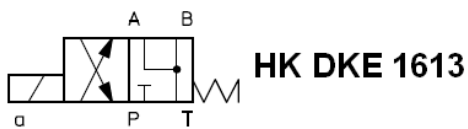
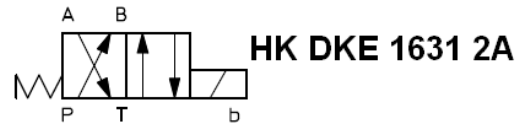
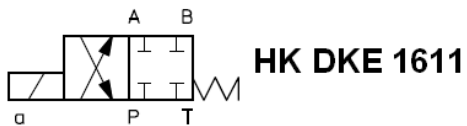
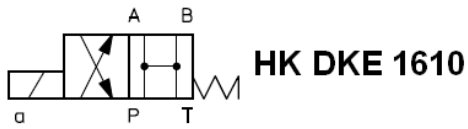


# HK DKE X 00 DC / HK DKE X 00 AC

Magnetwegeventil NG10 HK DKE  
Solenoid valve Size10 HK DKE

**HANSA FLEX**

## Schaltsymbole, Ausführungen / Symbols, Design



# HK DKE X 00 DC / HK DKE X 00 AC

Magnetwegeventil NG10 HK DKE  
Solenoid valve Size10 HK DKE



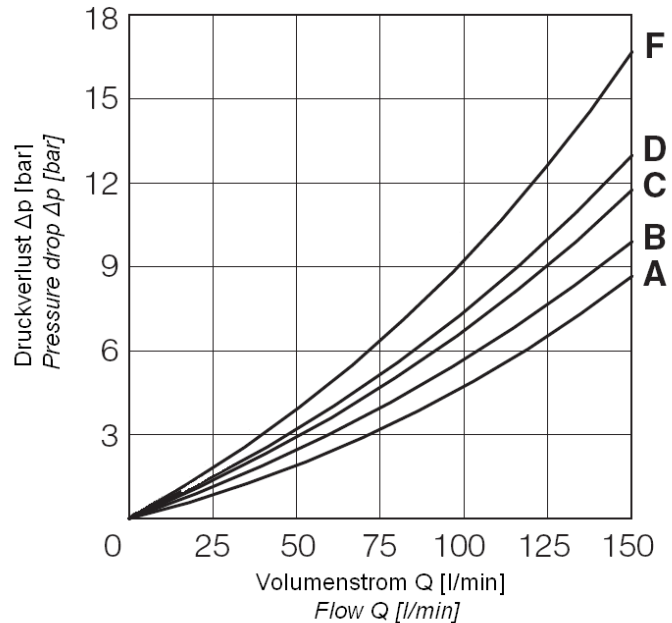
Kolbentypen, Durchflussrichtungen, Q/Δp – Kennlinien / Spool type, flow direction, Q/Δp - diagram

## HK DKE

Durchflussrichtung Flow direction	Kolbentyp Spool type				
	P→A	P→B	A→T	B→T	P→T
0, 0/1, 0/2, 2/2	A	A	B	B	
1, 1/1, 1/3, 6, 8	A	A	D	C	
3, 3/1, 7	A	A	C	D	
4	B	B	B	B	F
1/2	B	C	C	B	

## Q/Δp Diagramm

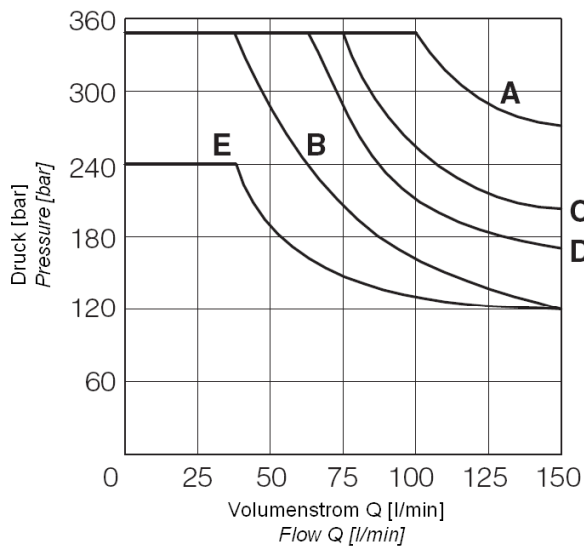
### Q/Δp Diagram



Diagramme, Kennlinien / Diagram, chart

## Schaltleistungsgrenzen / Operating limits

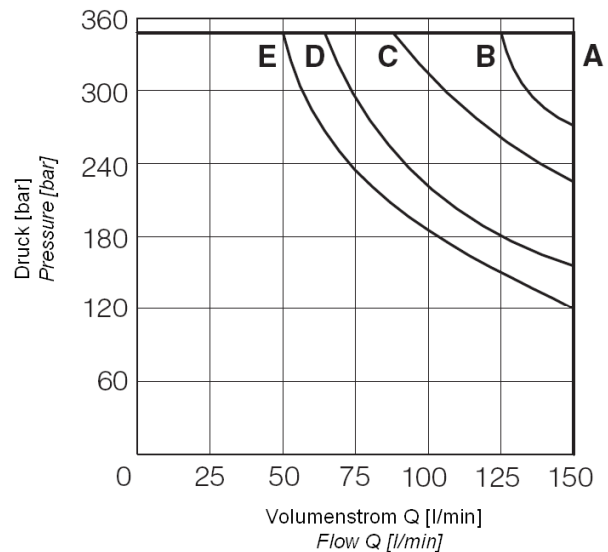
### HK DKE - AC



Kolbentypen / Spool type

- A - 0/1
- B - 4, 5, 19, 91
- C - 0, 1/1, 3, 3/1
- D - 1, 1/2, 0/2
- E - 6, 7, 8, 2/2

### HK DKE - DC



Kolbentypen / Spool type

- A - 0, 0/1, 1, 1/1, 3, 3/1, 1/2, 0/2, 8
- B - 6, 7
- C - 19, 91
- D - 4, 5
- E - 2/2

Trotz sorgfältigster Prüfung können wir Fehler nicht ausschließen und übernehmen keine Gewähr für die enthaltenen Angaben.

Despite careful checking, we cannot guarantee the accuracy of all information included on this site, and we accept no liability.

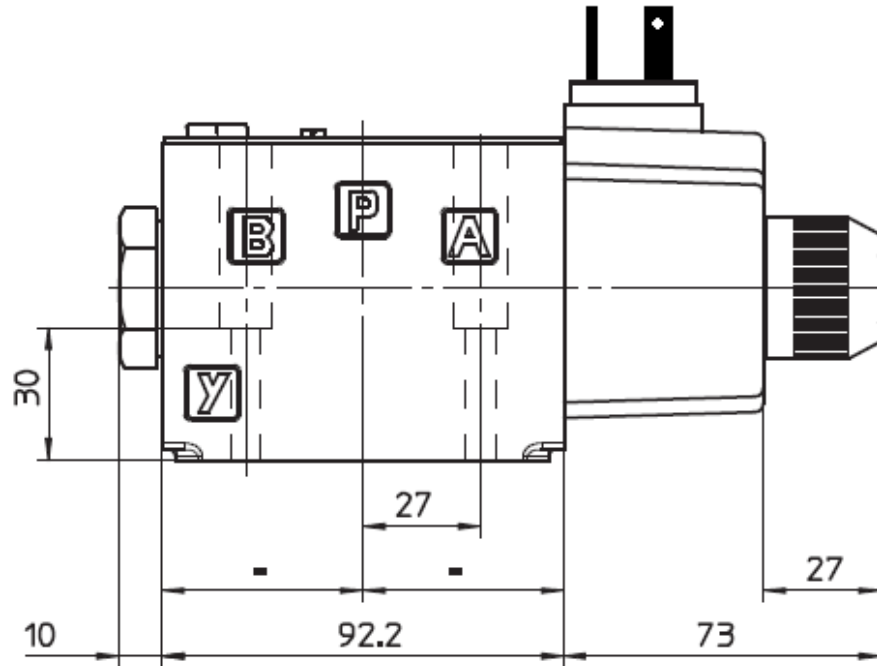
# HK DKE X 00 DC / HK DKE X 00 AC

Magnetwegeventil NG10 HK DKE  
*Solenoid valve Size10 HK DKE*

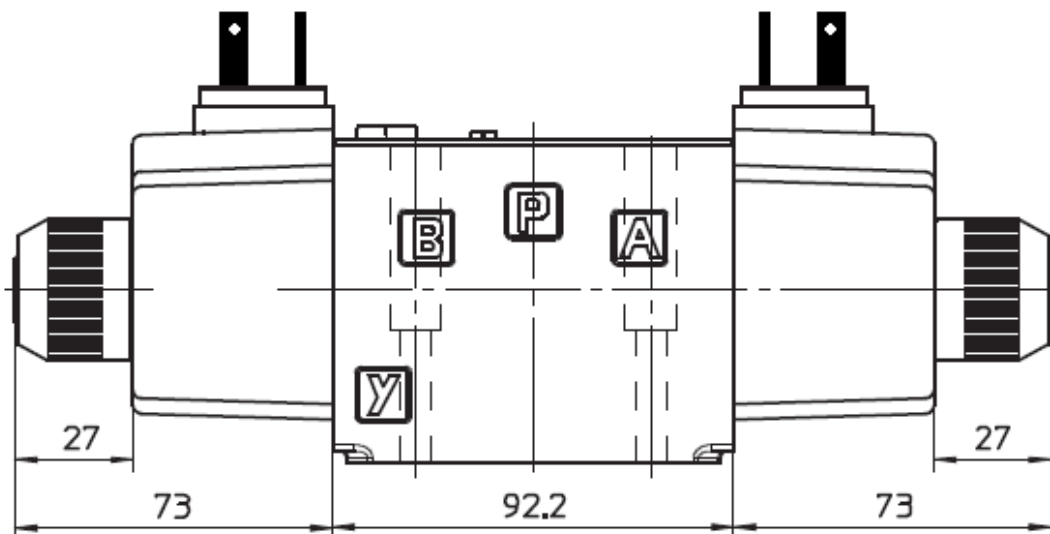
**HANSA FLEX**

Abmessungen / *Dimensions*

## HK DKE 16 AC



## HK DKE 17 AC



Schraubensatz: 4 Inbusschrauben M6x40 12.9

*Screw set: 4 socket head screws M6x40 12.9*

Trotz sorgfältigster Prüfung können wir Fehler nicht ausschließen und übernehmen keine Gewähr für die enthaltenen Angaben.  
Despite careful checking, we cannot guarantee the accuracy of all information included on this site, and we accept no liability.

HANSA-FLEX AG

[www.hansa-flex.com](http://www.hansa-flex.com)

# HK DKE X 00 DC / HK DKE X 00 AC

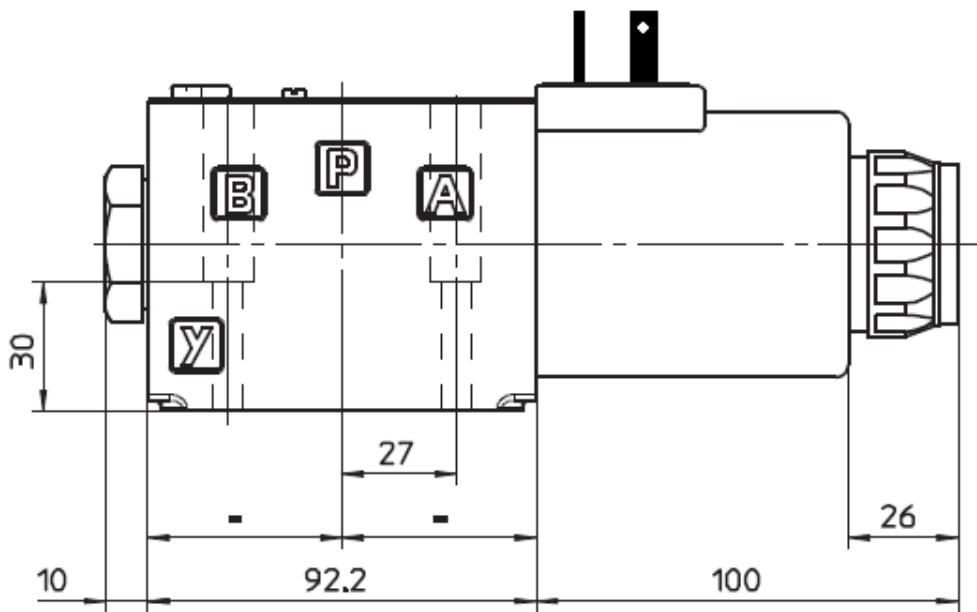
Magnetwegeventil NG10 HK DKE

*Solenoid valve Size10 HK DKE*

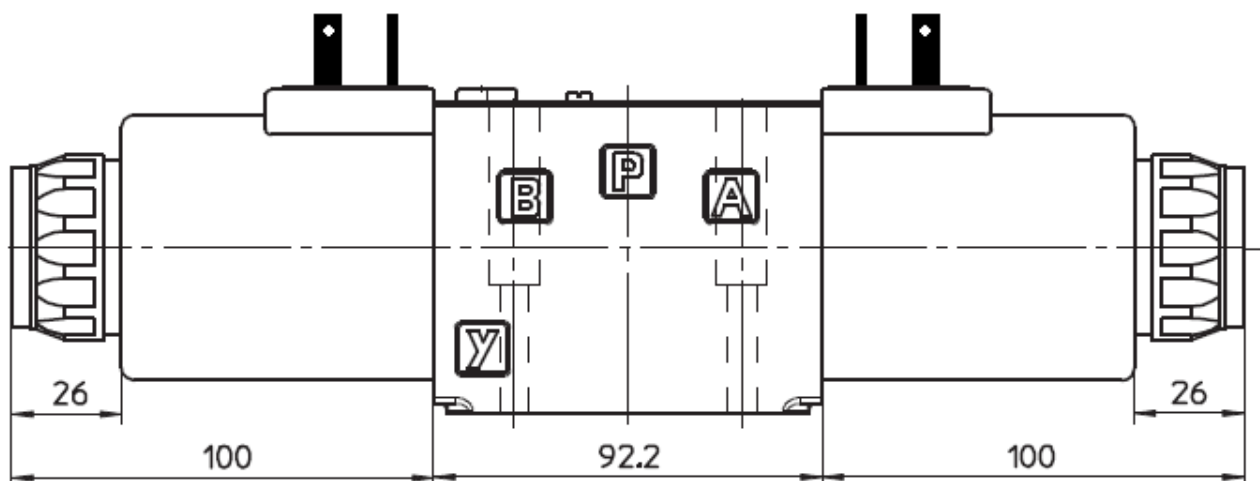
**HANSA FLEX**

Abmessungen / Dimensions

## HK DKE 16 DC



## HK DKE 17 DC



Schraubensatz: 4 Inbusschrauben M6x40 12.9

*Screw set: 4 socket head screws M6x40 12.9*

Trotz sorgfältigster Prüfung können wir Fehler nicht ausschließen und übernehmen keine Gewähr für die enthaltenen Angaben.  
Despite careful checking, we cannot guarantee the accuracy of all information included on this site, and we accept no liability.

HANSA-FLEX AG

[www.hansa-flex.com](http://www.hansa-flex.com)