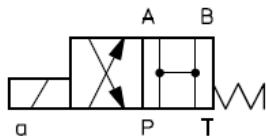


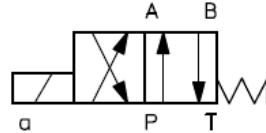
HK DG4V3

Magnetwegeventil NG6
Solenoid valve Size6

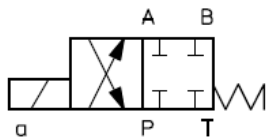
Schaltsymbole, Ausführungen / Symbols, Design



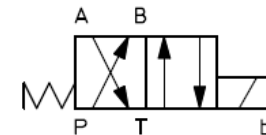
HK DG4V3 0B



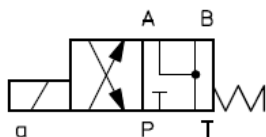
**HK DG4V3 0A
HK DG4V3 2A**



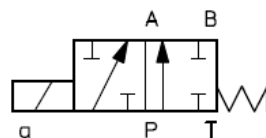
HK DG4V3 2B



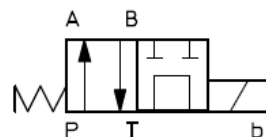
HK DG4V3 2AL



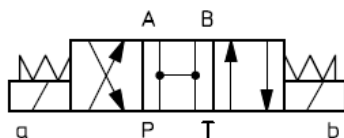
HK DG4V3 6B



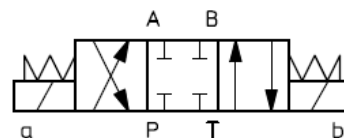
HK DG4V3 22A



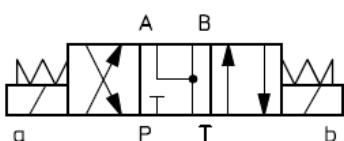
HK DG4V3 8BL



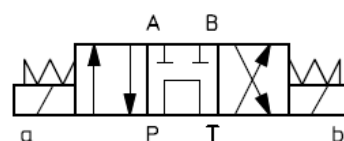
HK DG4V3 0C



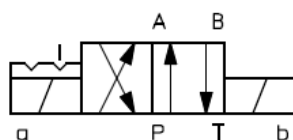
HK DG4V3 2C



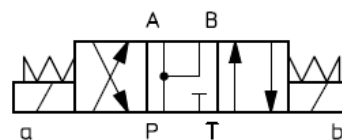
HK DG4V3 6C



HK DG4V3 8C



HK DG4V3 2N



HK DG4V3 7C

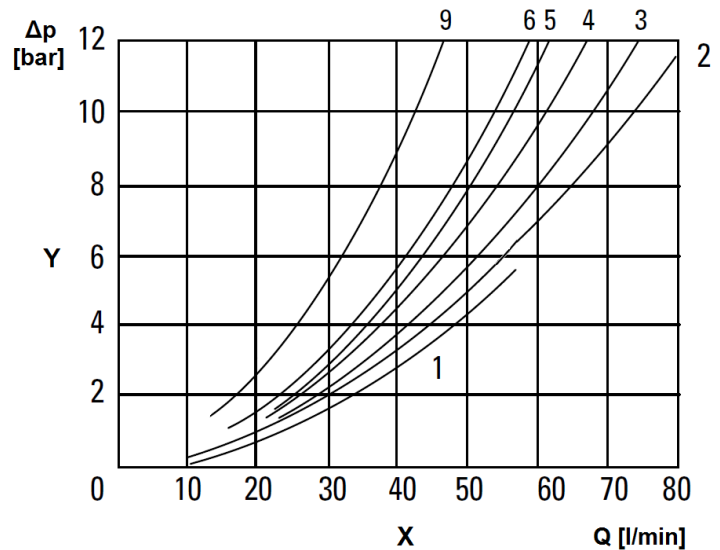
HK DG4V3

Magnetwegeventil NG6
Solenoid valve Size6



Kolbentypen, Durchflussrichtungen, Q/Δp – Kennlinien / Spool type, flow direction, Q/Δp - diagram

Y \ X	X			
	P→A	P→B	A→T	B→T
0A, 2BL, 2C	5	5	2	2
0B, 0C	4	4	2	2
2 AL	6	6	5	5
2N	6	6	3	3
6B, 6C	6	6	1	1
7C	4	4	3	3
8BL, 8C	9	9	5	5
22A	6	6	-	-



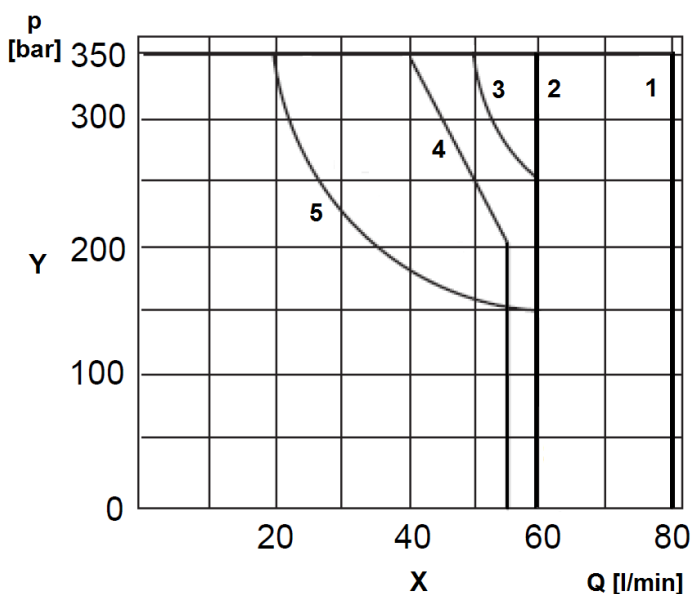
X – Durchflussrichtung / Flow direction

Y – Kolbentyp / Spool type

X – Volumenstrom / Flow

Y – Druckdifferenz / Pressure drop

Diagramme, Kennlinien / Diagram, chart



Z	Spool Type
1	2B, 2C
2	0C, 2N, 7C
3	2A, 2AL, 22A
4	8B, 8C
5	6B, 6C

Schaltleistungsgrenzen / Operating limits

HK DG4V3 *** DC

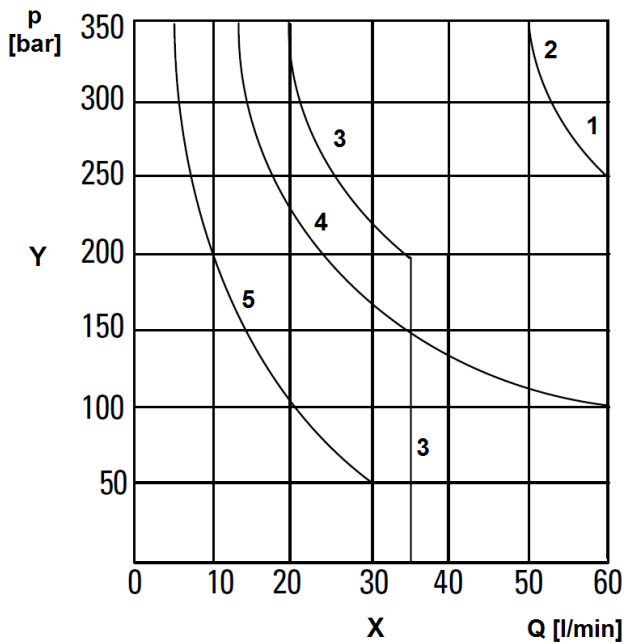
X – Volumenstrom / Flow

Y – Druck / Pressure

Z – Kolbentyp / Spool type

HK DG4V3

Magnetwegeventil NG6
Solenoid valve Size6



Schaltleistungsgrenzen / *Operating limits*

HK DG4V3 ***AC

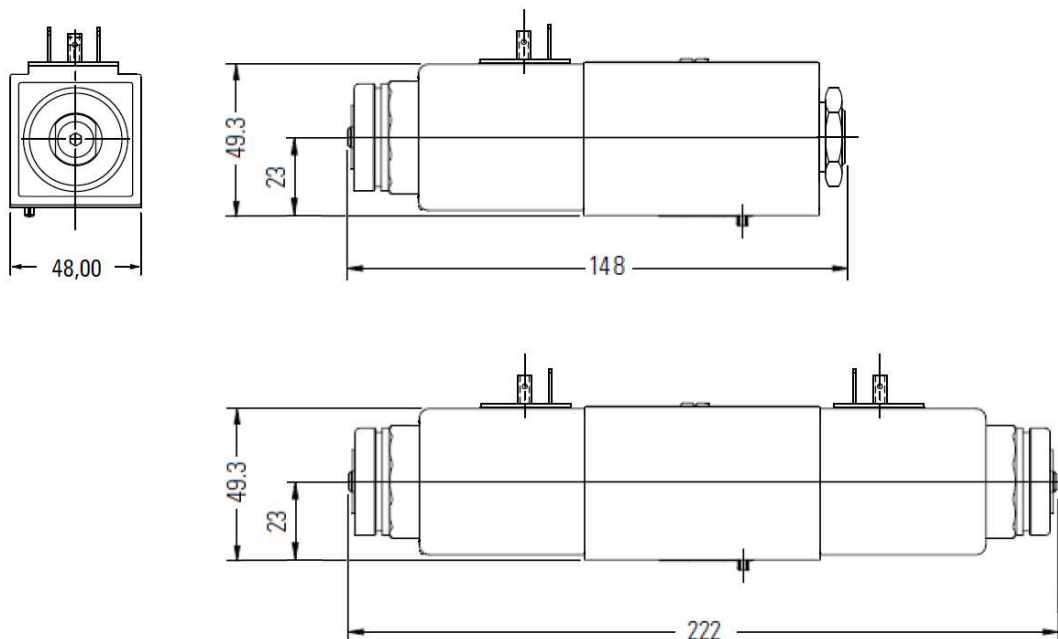
X – Volumenstrom / *Flow*

Y – Druck / *Pressure*

Z – Kolbentyp / *Spool type*

Z	1 - 0B, 0C, 2B, 2C, 2N, 7C
	2 - 0A, 2A, 2AL
	3 - 8BL, 8C
	4 - 6B, 6C
	5 - 22A

Abmessungen / *Dimensions*



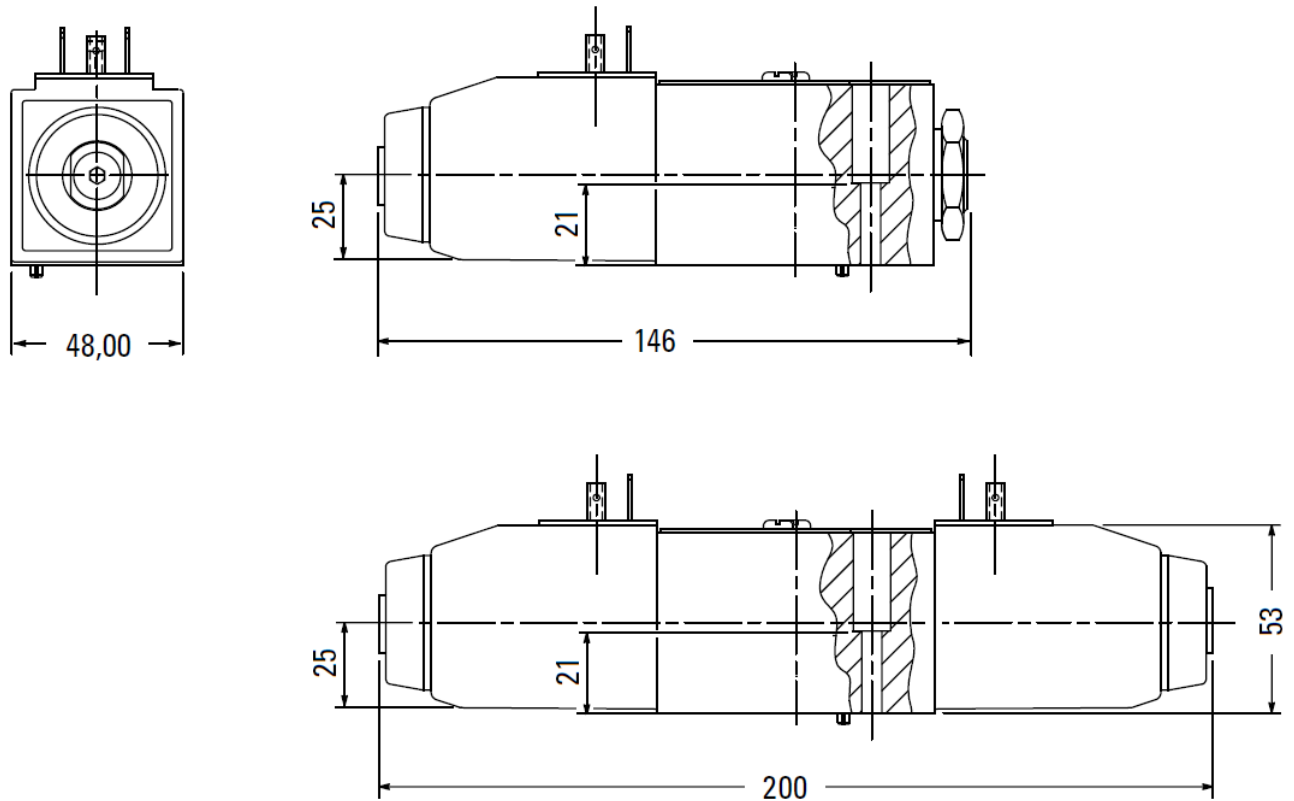
HK DG4V3 ***DC

HK DG4V3

Magnetwegeventil NG6

Solenoid valve Size6

HANSA FLEX



HK DG4V3 ***AC

Schraubensatz: 4 Inbusschrauben M5x30 12.9

Screw set: 4 socket head screws M5x30 12.9