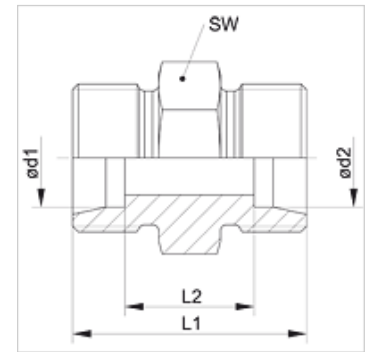


## Caratteristiche

|                         |   |
|-------------------------|---|
| Attacco 1               | Filetto esterno metrico cilindrico            |
| Tenuta 1                | Cono interno da 24°                           |
| Attacco 2               | Filetto esterno metrico cilindrico            |
| Tenuta 2                | Cono interno da 24°                           |
| Tipo                    | Raccordo filettato                            |
| Forma costruttiva       | diritto                                       |
| Norma                   | ISO 8434-1                                    |
| Entità della fornitura  | Tronchetto (senza dado e anello di serraggio) |
| Materiale               | Acciaio                                       |
| Protezione superficiale | con rivestimento elettrolitico                |



## Nota

Le istruzioni per montaggio, installazione, pressioni e temperature d'esercizio ammesse possono essere desunte dalle informazioni tecniche per i raccordi filettati dei tubi.

## Articolo

| Denominazione     | Serie | Pressione d'esercizio in bar: | Ø d1<br>(mm) | Ø d2<br>(mm) | L1<br>(mm) | L2<br>(mm) | SW<br>(mm) |
|-------------------|-------|-------------------------------|--------------|--------------|------------|------------|------------|
| XV 04 LL          | LL    | PN 100                        | 4            | 4            | 20         | 12,0       | 9          |
| XV 05 LL          | LL    | PN 100                        | 5            | 5            | 20         | 9,0        | 11         |
| XV 06 LL 04       | LL    | PN 100                        | 6            | 4            | 20         | 10,5       | 11         |
| XV 06 LL          | LL    | PN 100                        | 6            | 6            | 20         | 9,0        | 11         |
| XV 08 LL 04       | LL    | PN 100                        | 8            | 4            | 22         | 12,5       | 12         |
| XV 08 LL 06       | LL    | PN 100                        | 8            | 6            | 22         | 11,0       | 12         |
| XV 08 LL          | LL    | PN 100                        | 8            | 8            | 23         | 12,0       | 12         |
| XV 10 LL          | LL    | PN 100                        | 10           | 10           | 23         | 12,0       | 14         |
| XV 12 LL          | LL    | PN 100                        | 12           | 12           | 23         | 11,0       | 17         |
| XV NW 04 HL       | L     | PN 315                        | 6            | 6            | 24         | 10,0       | 12         |
| XV NW 06 HL 04    | L     | PN 315                        | 8            | 6            | 25         | 11,0       | 14         |
| XV NW 06 HL       | L     | PN 315                        | 8            | 8            | 25         | 11,0       | 14         |
| XV NW 08 HL 04    | L     | PN 315                        | 10           | 6            | 26         | 12,0       | 17         |
| XV NW 08 HL 06    | L     | PN 315                        | 10           | 8            | 26         | 12,0       | 17         |
| XV NW 08 HL       | L     | PN 315                        | 10           | 10           | 27         | 13,0       | 17         |
| XV NW 10 HL 04    | L     | PN 315                        | 12           | 6            | 27         | 13,0       | 19         |
| XV NW 10 HL 06    | L     | PN 315                        | 12           | 8            | 27         | 13,0       | 19         |
| XV NW 10 HL 08    | L     | PN 315                        | 12           | 10           | 28         | 14,0       | 19         |
| XV NW 10 HL       | L     | PN 315                        | 12           | 12           | 28         | 14,0       | 19         |
| XV NW 13 HL 04    | L     | PN 315                        | 15           | 6            | 28         | 14,0       | 24         |
| XV NW 13 HL 06    | L     | PN 315                        | 15           | 8            | 28         | 14,0       | 24         |
| XV NW 13 HL 08    | L     | PN 315                        | 15           | 10           | 29         | 15,0       | 24         |
| XV NW 13 HL 10    | L     | PN 315                        | 15           | 12           | 29         | 15,0       | 24         |
| XV NW 13 HL       | L     | PN 315                        | 15           | 15           | 30         | 16,0       | 24         |
| XV NW 16 HL 04    | L     | PN 315                        | 18           | 6            | 29         | 14,5       | 27         |
| XV NW 16 HL 06    | L     | PN 315                        | 18           | 8            | 29         | 14,5       | 27         |
| XV NW 16 HL 08    | L     | PN 315                        | 18           | 10           | 30         | 15,5       | 27         |
| XV NW 16 HL 10    | L     | PN 315                        | 18           | 12           | 30         | 15,5       | 27         |
| XV NW 16 HL 10 27 | L     | PN 315                        | 18           | 12           | 32         | 17,5       | 27         |
| XV NW 16 HL 13    | L     | PN 315                        | 18           | 15           | 31         | 16,5       | 27         |
| XV NW 16 HL       | L     | PN 315                        | 18           | 18           | 31         | 16,0       | 27         |
| XV NW 16 HL 27    | L     | PN 315                        | 18           | 18           | 35         | 20,0       | 27         |
| XV NW 20 HL 06    | L     | PN 160                        | 22           | 8            | 31         | 16,5       | 32         |
| XV NW 20 HL 08    | L     | PN 160                        | 22           | 10           | 32         | 17,5       | 32         |
| XV NW 20 HL 10    | L     | PN 160                        | 22           | 12           | 32         | 17,5       | 32         |
| XV NW 20 HL 13    | L     | PN 160                        | 22           | 15           | 33         | 18,5       | 32         |
| XV NW 20 HL 16    | L     | PN 160                        | 22           | 18           | 33         | 18,0       | 32         |
| XV NW 20 HL 16 27 | L     | PN 160                        | 22           | 18           | 35         | 20,0       | 32         |
| XV NW 20 HL       | L     | PN 160                        | 22           | 22           | 35         | 20,0       | 32         |
| XV NW 25 HL 06    | L     | PN 160                        | 28           | 8            | 33         | 18,5       | 41         |
| XV NW 25 HL 08    | L     | PN 160                        | 28           | 10           | 34         | 19,5       | 41         |
| XV NW 25 HL 10    | L     | PN 160                        | 28           | 12           | 34         | 19,5       | 41         |



## Articolo

| Denominazione     | Serie | Pressione d'esercizio in bar: | Ø d1<br>(mm) | Ø d2<br>(mm) | L1<br>(mm) | L2<br>(mm) | SW<br>(mm) |
|-------------------|-------|-------------------------------|--------------|--------------|------------|------------|------------|
| XV NW 25 HL 13    | L     | PN 160                        | 28           | 15           | 35         | 20,5       | 41         |
| XV NW 25 HL 16    | L     | PN 160                        | 28           | 18           | 35         | 20,0       | 41         |
| XV NW 25 HL 16 27 | L     | PN 160                        | 28           | 18           | 37         | 22,0       | 41         |
| XV NW 25 HL 20    | L     | PN 160                        | 28           | 22           | 37         | 22,0       | 41         |
| XV NW 25 HL       | L     | PN 160                        | 28           | 28           | 36         | 21,0       | 41         |
| XV NW 32 HL 20    | L     | PN 160                        | 35           | 22           | 39         | 21,0       | 46         |
| XV NW 32 HL 25    | L     | PN 160                        | 35           | 28           | 39         | 21,0       | 46         |
| XV NW 32 HL       | L     | PN 160                        | 35           | 35           | 41         | 20,0       | 46         |
| XV NW 40 HL 25    | L     | PN 160                        | 42           | 28           | 41         | 22,5       | 55         |
| XV NW 40 HL 32    | L     | PN 160                        | 42           | 35           | 43         | 21,5       | 55         |
| XV NW 40 HL       | L     | PN 160                        | 42           | 42           | 66         | 21,0       | 55         |
|                   |       |                               |              |              |            |            |            |
| XV NW 16 HL 13 HS | L / S | PN 315                        | 18           | 16           | 33         | 17,0       | 27         |
|                   |       |                               |              |              |            |            |            |
| XV NW 03 HS       | S     | PN 630                        | 6            | 6            | 30         | 16,0       | 14         |
| XV NW 04 HS 03    | S     | PN 630                        | 8            | 6            | 32         | 18,0       | 17         |
| XV NW 04 HS       | S     | PN 630                        | 8            | 8            | 32         | 18,0       | 17         |
| XV NW 06 HS 03    | S     | PN 630                        | 10           | 6            | 32         | 17,5       | 19         |
| XV NW 06 HS 04    | S     | PN 630                        | 10           | 8            | 32         | 17,5       | 19         |
| XV NW 06 HS       | S     | PN 630                        | 10           | 10           | 32         | 17,0       | 19         |
| XV NW 08 HS 03    | S     | PN 630                        | 12           | 6            | 34         | 19,5       | 22         |
| XV NW 08 HS 04    | S     | PN 630                        | 12           | 8            | 34         | 19,5       | 22         |
| XV NW 08 HS 06    | S     | PN 630                        | 12           | 10           | 34         | 19,0       | 22         |
| XV NW 08 HS       | S     | PN 630                        | 12           | 12           | 34         | 19,0       | 22         |
| XV NW 10 HS 03    | S     | PN 630                        | 14           | 6            | 36         | 21,0       | 24         |
| XV NW 10 HS 04    | S     | PN 630                        | 14           | 8            | 36         | 21,0       | 24         |
| XV NW 10 HS 06    | S     | PN 630                        | 14           | 10           | 36         | 20,5       | 24         |
| XV NW 10 HS 08    | S     | PN 630                        | 14           | 12           | 36         | 20,5       | 24         |
| XV NW 10 HS       | S     | PN 630                        | 14           | 14           | 38         | 22,0       | 24         |
| XV NW 13 HS 03    | S     | PN 400                        | 16           | 6            | 36         | 20,5       | 27         |
| XV NW 13 HS 04    | S     | PN 400                        | 16           | 8            | 36         | 20,5       | 27         |
| XV NW 13 HS 06    | S     | PN 400                        | 16           | 10           | 36         | 20,0       | 27         |
| XV NW 13 HS 08    | S     | PN 400                        | 16           | 12           | 36         | 20,0       | 27         |
| XV NW 13 HS 10    | S     | PN 400                        | 16           | 14           | 38         | 21,5       | 27         |
| XV NW 13 HS       | S     | PN 400                        | 16           | 16           | 38         | 21,0       | 27         |
| XV NW 16 HS 06    | S     | PN 400                        | 20           | 10           | 40         | 22,0       | 32         |
| XV NW 16 HS 08    | S     | PN 400                        | 20           | 12           | 40         | 22,0       | 32         |
| XV NW 16 HS 10    | S     | PN 400                        | 20           | 14           | 42         | 23,5       | 32         |
| XV NW 16 HS 13    | S     | PN 400                        | 20           | 16           | 42         | 23,0       | 32         |
| XV NW 16 HS       | S     | PN 400                        | 20           | 20           | 44         | 23,0       | 32         |
| XV NW 20 HS 13    | S     | PN 400                        | 25           | 16           | 46         | 25,5       | 41         |
| XV NW 20 HS 16    | S     | PN 400                        | 25           | 20           | 48         | 25,5       | 41         |
| XV NW 20 HS       | S     | PN 400                        | 25           | 25           | 50         | 26,0       | 41         |
| XV NW 25 HS 13    | S     | PN 400                        | 30           | 16           | 48         | 26,0       | 46         |
| XV NW 25 HS 16    | S     | PN 400                        | 30           | 20           | 50         | 26,0       | 46         |
| XV NW 25 HS 20    | S     | PN 400                        | 30           | 25           | 52         | 26,5       | 46         |
| XV NW 25 HS       | S     | PN 400                        | 30           | 30           | 54         | 27,0       | 46         |
| XV NW 32 HS 13    | S     | PN 315                        | 38           | 16           | 53         | 28,5       | 55         |
| XV NW 32 HS 20    | S     | PN 315                        | 38           | 25           | 57         | 29,0       | 55         |
| XV NW 32 HS 25    | S     | PN 315                        | 38           | 30           | 59         | 29,5       | 55         |
| XV NW 32 HS       | S     | PN 315                        | 38           | 38           | 61         | 29,0       | 55         |
|                   |       |                               |              |              |            |            |            |
| XV NW 13 HS 13 HL | S / L | PN 400                        | 16           | 15           | 36         | 20,5       | 27         |
| XV NW 16 HS 13 HL | S / L | PN 400                        | 20           | 15           | 40         | 22,5       | 32         |
| XV NW 16 HS 16 HL | S / L | PN 400                        | 20           | 18           | 40         | 22,0       | 32         |
| XV NW 20 HS 20 HL | S / L | PN 400                        | 25           | 22           | 46         | 26,5       | 41         |

Serie: LL = molto leggero L = leggero S = pesante - PN = pressione nominale PB = massima pressione d'esercizio - Ø d1 = diametro esterno del tubo - Ø d2 = diametro esterno del tubo

## Varianti dei prodotti

|                    |  |
|--------------------|--|
| XV VA              | Raccordo filettato, Acciaio inossidabile |
| V-LL / V-HL / V-HS | Raccordo filettato, Acciaio              |