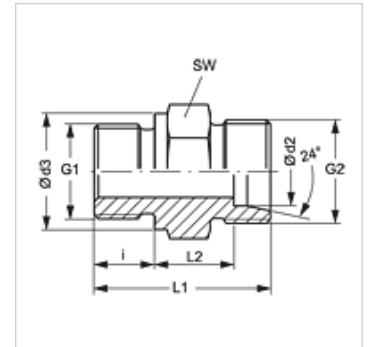


### Caratteristiche

|                         |                                               |
|-------------------------|-----------------------------------------------|
| Attacco 1               | Filetto esterno BSP cilindrico                |
| Tenuta 1                | Forma B                                       |
| Attacco 2               | Filetto esterno metrico cilindrico            |
| Tenuta 2                | Cono interno da 24°                           |
| Tipo                    | Raccordo filettato maschio                    |
| Forma costruttiva       | diritto                                       |
| Norma                   | DIN 2353<br>ISO 8434-1                        |
| Entità della fornitura  | Tronchetto (senza dado e anello di serraggio) |
| Materiale               | Acciaio                                       |
| Protezione superficiale | con rivestimento elettrolitico                |



### Nota

Le istruzioni per montaggio, installazione, pressioni e temperature d'esercizio ammesse possono essere desunte dalle informazioni tecniche per i raccordi filettati dei tubi.

### Articolo

| Denominazione      | Serie | Pressione d'esercizio in bar: | Ø d2 (mm) | G1           | G2         | Ø d3 (mm) | i (mm) | L1 (mm) | L2 (mm) | SW (mm) |
|--------------------|-------|-------------------------------|-----------|--------------|------------|-----------|--------|---------|---------|---------|
| XVR NW 04 HL       | L     | PN 315                        | 6         | G 1/8" -28   | M 12 x 1,5 | 14        | 8      | 23,5    | 8,5     | 14      |
| XVR NW 04 HL 1/4   | L     | PN 315                        | 6         | G 1/4" -19   | M 12 x 1,5 | 18        | 12     | 29,0    | 10,0    | 19      |
| XVR NW 04 HL 3/8   | L     | PN 315                        | 6         | G 3/8" -19   | M 12 x 1,5 | 22        | 12     | 30,5    | 11,5    | 22      |
| XVR NW 04 HL 1/2   | L     | PN 315                        | 6         | G 1/2" -14   | M 12 x 1,5 | 26        | 14     | 33,0    | 12,0    | 27      |
| XVR NW 06 HL 1/8   | L     | PN 315                        | 8         | G 1/8" -28   | M 14 x 1,5 | 14        | 8      | 24,0    | 9,0     | 14      |
| XVR NW 06 HL       | L     | PN 315                        | 8         | G 1/4" -19   | M 14 x 1,5 | 18        | 12     | 29,0    | 10,0    | 19      |
| XVR NW 06 HL 3/8   | L     | PN 315                        | 8         | G 3/8" -19   | M 14 x 1,5 | 22        | 12     | 30,5    | 11,5    | 22      |
| XVR NW 06 HL 1/2   | L     | PN 315                        | 8         | G 1/2" -14   | M 14 x 1,5 | 26        | 14     | 33,0    | 12,0    | 27      |
| XVR NW 08 HL 1/8   | L     | PN 315                        | 10        | G 1/8" -28   | M 16 x 1,5 | 14        | 8      | 25,5    | 10,5    | 17      |
| XVR NW 08 HL       | L     | PN 315                        | 10        | G 1/4" -19   | M 16 x 1,5 | 18        | 12     | 30,0    | 11,0    | 19      |
| XVR NW 08 HL 3/8   | L     | PN 315                        | 10        | G 3/8" -19   | M 16 x 1,5 | 22        | 12     | 31,5    | 12,5    | 22      |
| XVR NW 08 HL 1/2   | L     | PN 315                        | 10        | G 1/2" -14   | M 16 x 1,5 | 26        | 14     | 34,0    | 13,0    | 27      |
| XVR NW 10 HL 1/8   | L     | PN 315                        | 12        | G 1/8" -28   | M 18 x 1,5 | 14        | 8      | 26,5    | 11,5    | 19      |
| XVR NW 10 HL 1/4   | L     | PN 315                        | 12        | G 1/4" -19   | M 18 x 1,5 | 18        | 12     | 31,0    | 12,0    | 19      |
| XVR NW 10 HL       | L     | PN 315                        | 12        | G 3/8" -19   | M 18 x 1,5 | 22        | 12     | 31,5    | 12,5    | 22      |
| XVR NW 10 HL 1/2   | L     | PN 315                        | 12        | G 1/2" -14   | M 18 x 1,5 | 26        | 14     | 34,0    | 13,0    | 27      |
| XVR NW 10 HL 3/4   | L     | PN 315                        | 12        | G 3/4" -14   | M 18 x 1,5 | 32        | 16     | 37,0    | 14,0    | 32      |
| XVR NW 13 HL 1/4   | L     | PN 315                        | 15        | G 1/4" -19   | M 22 x 1,5 | 18        | 12     | 32,0    | 13,0    | 24      |
| XVR NW 13 HL 3/8   | L     | PN 250                        | 15        | G 3/8" -19   | M 22 x 1,5 | 22        | 12     | 33,0    | 14,0    | 24      |
| XVR NW 13 HL       | L     | PN 250                        | 15        | G 1/2" -14   | M 22 x 1,5 | 26        | 14     | 35,0    | 14,0    | 27      |
| XVR NW 13 HL 3/4   | L     | PN 250                        | 15        | G 3/4" -14   | M 22 x 1,5 | 32        | 16     | 38,0    | 15,0    | 32      |
| XVR NW 13 HL 1     | L     | PN 250                        | 15        | G 1" -11     | M 22 x 1,5 | 39        | 18     | 42,5    | 17,5    | 41      |
| XVR NW 16 HL 3/8   | L     | PN 250                        | 18        | G 3/8" -19   | M 26 x 1,5 | 22        | 12     | 33,5    | 14,0    | 27      |
| XVR NW 16 HL       | L     | PN 250                        | 18        | G 1/2" -14   | M 26 x 1,5 | 26        | 14     | 36,0    | 14,5    | 27      |
| XVR NW 16 HL 3/4   | L     | PN 250                        | 18        | G 3/4" -14   | M 26 x 1,5 | 32        | 16     | 38,0    | 14,5    | 32      |
| XVR NW 16 HL 1     | L     | PN 250                        | 18        | G 1" -11     | M 26 x 1,5 | 39        | 18     | 40,5    | 15,0    | 41      |
| XVR NW 20 HL 1/2   | L     | PN 160                        | 22        | G 1/2" -14   | M 30 x 2   | 26        | 14     | 38,0    | 16,5    | 32      |
| XVR NW 20 HL       | L     | PN 160                        | 22        | G 3/4" -14   | M 30 x 2   | 32        | 16     | 40,0    | 16,5    | 32      |
| XVR NW 20 HL 1     | L     | PN 160                        | 22        | G 1" -11     | M 30 x 2   | 39        | 18     | 43,0    | 17,5    | 41      |
| XVR NW 25 HL 1/2   | L     | PN 160                        | 28        | G 1/2" -14   | M 36 x 2   | 26        | 14     | 40,0    | 18,5    | 41      |
| XVR NW 25 HL 3/4   | L     | PN 160                        | 28        | G 3/4" -14   | M 36 x 2   | 32        | 16     | 41,0    | 17,5    | 41      |
| XVR NW 25 HL       | L     | PN 160                        | 28        | G 1" -11     | M 36 x 2   | 39        | 18     | 43,0    | 17,5    | 41      |
| XVR NW 25 HL 1 1/4 | L     | PN 160                        | 28        | G 1.1/4" -11 | M 36 x 2   | 49        | 20     | 46,0    | 18,3    | 50      |
| XVR NW 32 HL 3/4   | L     | PN 160                        | 35        | G 3/4" -14   | M 45 x 2   | 32        | 16     | 45,0    | 18,5    | 46      |
| XVR NW 32 HL 1     | L     | PN 160                        | 35        | G 1" -11     | M 45 x 2   | 39        | 18     | 47,0    | 18,5    | 46      |
| XVR NW 32 HL       | L     | PN 160                        | 35        | G 1.1/4" -11 | M 45 x 2   | 49        | 20     | 48,0    | 17,5    | 50      |
| XVR NW 32 HL 1 1/2 | L     | PN 160                        | 35        | G 1.1/2" -11 | M 45 x 2   | 55        | 22     | 51,0    | 18,5    | 55      |
| XVR NW 40 HL 1 1/4 | L     | PN 160                        | 42        | G 1.1/4" -11 | M 52 x 2   | 49        | 20     | 50,0    | 19,0    | 55      |
| XVR NW 40 HL       | L     | PN 160                        | 42        | G 1.1/2" -11 | M 52 x 2   | 55        | 22     | 52,0    | 19,0    | 55      |
| XVR NW 03 HS 1/8   | S     | PN 400                        | 6         | G 1/8" -28   | M 14 x 1,5 | 14        | 8      | 27,5    | 12,5    | 14      |
| XVR NW 03 HS       | S     | PN 400                        | 6         | G 1/4" -19   | M 14 x 1,5 | 18        | 12     | 32,0    | 13,0    | 19      |



### Articolo

| Denominazione      | Serie | Pressione d'esercizio in bar: | Ø d2 (mm) | G1           | G2         | Ø d3 (mm) | i (mm) | L1 (mm) | L2 (mm) | SW (mm) |
|--------------------|-------|-------------------------------|-----------|--------------|------------|-----------|--------|---------|---------|---------|
| XVR NW 03 HS 3/8   | S     | PN 400                        | 6         | G 3/8" -19   | M 14 x 1,5 | 22        | 12     | 32,5    | 13,5    | 22      |
| XVR NW 03 HS 1/2   | S     | PN 400                        | 6         | G 1/2" -14   | M 14 x 1,5 | 26        | 14     | 35,0    | 14,0    | 27      |
| XVR NW 04 HS       | S     | PN 400                        | 8         | G 1/4" -19   | M 16 x 1,5 | 18        | 12     | 34,0    | 15,0    | 19      |
| XVR NW 04 HS 3/8   | S     | PN 400                        | 8         | G 3/8" -19   | M 16 x 1,5 | 22        | 12     | 34,5    | 15,5    | 22      |
| XVR NW 04 HS 1/2   | S     | PN 400                        | 8         | G 1/2" -14   | M 16 x 1,5 | 26        | 14     | 37,0    | 16,0    | 27      |
| XVR NW 06 HS 1/4   | S     | PN 400                        | 10        | G 1/4" -19   | M 18 x 1,5 | 18        | 12     | 34,0    | 14,5    | 19      |
| XVR NW 06 HS       | S     | PN 400                        | 10        | G 3/8" -19   | M 18 x 1,5 | 22        | 12     | 34,5    | 15,0    | 22      |
| XVR NW 06 HS 1/2   | S     | PN 400                        | 10        | G 1/2" -14   | M 18 x 1,5 | 26        | 14     | 39,0    | 17,5    | 27      |
| XVR NW 08 HS 1/4   | S     | PN 400                        | 12        | G 1/4" -19   | M 20 x 1,5 | 18        | 12     | 36,0    | 16,5    | 22      |
| XVR NW 08 HS       | S     | PN 400                        | 12        | G 3/8" -19   | M 20 x 1,5 | 22        | 12     | 36,5    | 17,0    | 22      |
| XVR NW 08 HS 1/2   | S     | PN 400                        | 12        | G 1/2" -14   | M 20 x 1,5 | 26        | 14     | 39,0    | 17,5    | 27      |
| XVR NW 08 HS 3/4   | S     | PN 400                        | 12        | G 3/4" -14   | M 20 x 1,5 | 32        | 16     | 41,0    | 17,5    | 32      |
| XVR NW 10 HS 3/8   | S     | PN 400                        | 14        | G 3/8" -19   | M 22 x 1,5 | 22        | 12     | 38,5    | 18,5    | 27      |
| XVR NW 10 HS       | S     | PN 400                        | 14        | G 1/2" -14   | M 22 x 1,5 | 27        | 14     | 41,0    | 19,0    | 27      |
| XVR NW 10 HS 3/4   | S     | PN 400                        | 14        | G 3/4" -14   | M 22 x 1,5 | 32        | 16     | 43,0    | 19,0    | 32      |
| XVR NW 13 HS 1/4   | S     | PN 400                        | 16        | G 1/4" -19   | M 24 x 1,5 | 22        | 12     | 38,0    | 18,5    | 27      |
| XVR NW 13 HS 3/8   | S     | PN 400                        | 16        | G 3/8" -19   | M 24 x 1,5 | 22        | 12     | 39,0    | 18,5    | 27      |
| XVR NW 13 HS       | S     | PN 400                        | 16        | G 1/2" -14   | M 24 x 1,5 | 26        | 14     | 41,0    | 18,5    | 27      |
| XVR NW 13 HS 3/4   | S     | PN 400                        | 16        | G 3/4" -14   | M 24 x 1,5 | 32        | 16     | 45,0    | 20,5    | 32      |
| XVR NW 16 HS 1/2   | S     | PN 400                        | 20        | G 1/2" -14   | M 30 x 2   | 26        | 14     | 45,0    | 20,5    | 32      |
| XVR NW 16 HS       | S     | PN 400                        | 20        | G 3/4" -14   | M 30 x 2   | 39        | 18     | 47,0    | 20,5    | 32      |
| XVR NW 16 HS 1     | S     | PN 250                        | 20        | G 1" -11     | M 30 x 2   | 39        | 18     | 50,0    | 21,5    | 41      |
| XVR NW 20 HS 1/2   | S     | PN 250                        | 25        | G 1/2" -14   | M 36 x 2   | 26        | 14     | 49,0    | 23,0    | 41      |
| XVR NW 20 HS 3/4   | S     | PN 250                        | 25        | G 3/4" -14   | M 36 x 2   | 32        | 16     | 51,0    | 23,5    | 41      |
| XVR NW 20 HS       | S     | PN 250                        | 25        | G 1" -11     | M 36 x 2   | 39        | 18     | 53,0    | 23,0    | 41      |
| XVR NW 20 HS 1 1/4 | S     | PN 160                        | 25        | G 1.1/4" -11 | M 36 x 2   | 49        | 20     | 56,0    | 24,0    | 50      |
| XVR NW 25 HS 3/4   | S     | PN 160                        | 30        | G 3/4" -14   | M 42 x 2   | 32        | 16     | 53,0    | 23,5    | 46      |
| XVR NW 25 HS 1     | S     | PN 160                        | 30        | G 1" -11     | M 42 x 2   | 39        | 18     | 55,0    | 23,5    | 46      |
| XVR NW 25 HS       | S     | PN 160                        | 30        | G 1.1/4" -11 | M 42 x 2   | 49        | 20     | 57,0    | 23,5    | 50      |
| XVR NW 25 HS 1 1/2 | S     | PN 160                        | 30        | G 1.1/2" -11 | M 42 x 2   | 55        | 22     | 50,0    | 23,5    | 55      |
| XVR NW 32 HS 1     | S     | PN 160                        | 38        | G 1" -11     | M 52 x 2   | 39        | 18     | 60,0    | 26,0    | 55      |
| XVR NW 32 HS 1 1/4 | S     | PN 160                        | 38        | G 1.1/4" -11 | M 52 x 2   | 49        | 20     | 62,0    | 26,0    | 55      |
| XVR NW 32 HS       | S     | PN 160                        | 38        | G 1.1/2" -11 | M 52 x 2   | 55        | 22     | 64,0    | 26,0    | 55      |

Serie: LL = molto leggero L = leggero S = pesante - PN = pressione nominale PB = massima pressione d'esercizio - Ø d2 = diametro esterno del tubo

### Varianti dei prodotti

|        |                                                  |
|--------|--------------------------------------------------|
| XVR VA | Raccordo filettato maschio, Acciaio inossidabile |
| VR     | Raccordo filettato maschio, Acciaio              |