

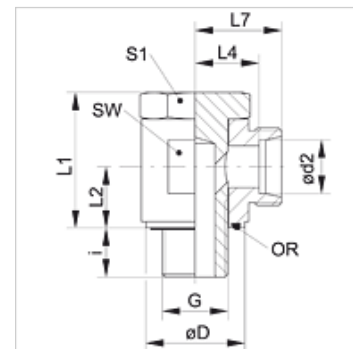
XSDOR VA

Raccordo orientabile a flusso libero, W90°

HANSA FLEX

Caratteristiche

Attacco 1	Filetto esterno BSP cilindrico
Tenuta 1	Forma E
Attacco 2	Filetto esterno metrico cilindrico
Tenuta 2	Cono interno da 24°
Tipo	Raccordo orientabile a flusso libero
Forma costruttiva	Angolo di 90°
Norma	DIN 2353 ISO 8434-1
Entità della fornitura	Tronchetto (senza dado e anello di serraggio)
Materiale	Acciaio inossidabile



Nota

Le istruzioni per montaggio, installazione, pressioni e temperature d'esercizio ammesse possono essere desunte dalle informazioni tecniche per i raccordi filettati dei tubi.

Avvertenza per l'ordinazione

Guarnizioni in NBR
FPM (Viton) su richiesta

Articolo

Denominazione	Serie	Pressione d'esercizio in bar:	Ø d2	G	Ø D	i	L1	L2	L4	L7	SW	S1	OR
			(mm)		(mm)	(mm)	(mm)	(mm)	(mm)	(mm)	(mm)	(mm)	
XSDOR 04 LL VA	LL	PN 100	4	G 1/8" -28	14,5	8,0	23,5	10,5	14,0	18,0	17	17	7,65 x 1,78
XSDOR 06 LL VA	LL	PN 100	6	G 1/8" -28	14,5	8,0	23,5	10,5	13,5	19,0	17	17	7,65 x 1,78
XSDOR 08 LL VA	LL	PN 100	8	G 1/8" -28	14,5	8,0	23,5	10,5	13,5	19,0	17	17	7,65 x 1,78
XSDOR NW 04 HL VA	L	PN 315	6	G 1/8" -28	14,5	8,0	23,5	10,5	12,0	19,0	17	17	7,65 x 1,78
XSDOR NW 06 HL VA	L	PN 315	8	G 1/4" -19	19,0	13,0	29,0	14,0	14,5	21,5	22	19	11,10 x 1,78
XSDOR NW 08 HL VA	L	PN 315	10	G 1/4" -19	19,0	12,5	29,0	14,0	15,5	22,5	22	19	11,10 x 1,78
XSDOR NW 10 HL 1/4 VA	L	PN 315	12	G 1/4" -19	19,0	12,0	34,0	16,5	18,0	25,0	27	19	11,10 x 1,78
XSDOR NW 10 HL VA	L	PN 315	12	G 3/8" -19	22,5	12,0	35,0	16,5	18,0	25,0	27	24	14,00 x 1,78
XSDOR NW 13 HL VA	L	PN 315	15	G 1/2" -14	27,0	12,0	46,0	21,5	21,5	28,5	32	27	18,77 x 1,78
XSDOR NW 16 HL VA	L	PN 315	18	G 1/2" -14	27,0	14,0	46,0	21,5	21,0	28,5	32	27	18,77 x 1,78
XSDOR NW 20 HL VA	L	PN 160	22	G 3/4" -14	32,5	16,0	52,0	24,0	27,5	35,0	41	36	23,81 x 2,62
XSDOR NW 25 HL VA	L	PN 160	28	G 1" -11	40,0	18,0	64,0	30,5	32,0	39,5	50	46	29,82 x 2,62
XSDOR NW 32 HL VA	L	PN 160	35	G 1.1/4" -11	50,0	20,0	75,0	35,5	36,0	46,5	60	50	37,77 x 2,62
XSDOR NW 40 HL VA	L	PN 160	42	G 1.1/2" -11	55,5	22,0	74,0	40,5	40,5	51,5	70	60	41,28 x 3,53
XSDOR NW 03 HS VA	S	PN 400	6	G 1/4" -19	19,0	13,0	29,0	14,0	16,5	23,5	22	19	11,10 x 1,78
XSDOR NW 04 HS VA	S	PN 400	8	G 1/4" -19	19,0	13,0	29,0	14,0	16,5	23,5	22	19	11,10 x 1,78
XSDOR NW 06 HS VA	S	PN 400	10	G 3/8" -19	22,5	12,0	35,5	16,5	18,5	26,0	27	24	14,00 x 1,78
XSDOR NW 08 HS VA	S	PN 400	12	G 3/8" -19	22,5	12,0	35,0	16,5	18,5	26,0	27	24	14,00 x 1,78
XSDOR NW 10 HS VA	S	PN 400	14	G 1/2" -14	27,0	12,0	46,0	21,5	22,5	30,5	30	27	18,77 x 1,78
XSDOR NW 13 HS VA	S	PN 315	16	G 1/2" -14	27,0	14,0	46,0	21,5	22,0	30,5	30	27	18,77 x 1,78
XSDOR NW 16 HS VA	S	PN 315	20	G 3/4" -14	32,5	16,0	52,0	24,0	26,5	37,0	41	36	23,81 x 2,62
XSDOR NW 20 HS VA	S	PN 250	25	G 1" -11	40,0	19,0	63,0	30,5	31,5	43,5	50	46	29,82 x 2,62
XSDOR NW 25 HS VA	S	PN 160	30	G 1.1/4" -11	50,0	20,0	75,0	35,5	37,0	50,5	60	50	37,77 x 2,62
XSDOR NW 32 HS VA	S	PN 160	38	G 1.1/2" -11	55,5	22,0	74,0	40,5	41,5	57,5	70	60	41,28 x 3,53

PN = pressione nominale PB = massima pressione d'esercizio - Serie: LL = molto leggero L = leggero S = pesante - Ø = diametro esterno tubo

Varianti dei prodotti

XSDOR	Raccordo orientabile a flusso libero, W90°, Acciaio
SDOR VA	Raccordo orientabile a flusso libero, W90°, Acciaio inossidabile