

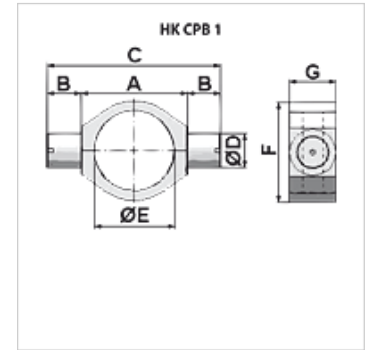
# HK CPB

Perno orientabile CPB

**HANSA FLEX**

## Caratteristiche

**Materiale** Acciaio S355J0 (Fe510C)



## Nota

Tolleranza  $\varnothing E \leq 100$ : +0,2; Tolleranza  $\varnothing E > 100$ : +0,4

## Articolo

| Denominazione   | A<br>(mm) | B<br>(mm) | C<br>(mm) | F<br>(mm) | G<br>(mm) | $\varnothing D$<br>(mm) | $\varnothing E$<br>(mm) | Peso<br>(kg) |
|-----------------|-----------|-----------|-----------|-----------|-----------|-------------------------|-------------------------|--------------|
| HK CPB 035 1515 | 50        | 15        | 80        | 45        | 20        | 15                      | 35                      | 0,17         |
| HK CPB 040 1515 | 50        | 15        | 80        | 50        | 20        | 15                      | 40                      | 0,16         |
| HK CPB 042 2020 | 55        | 20        | 95        | 55        | 25        | 20                      | 42                      | 0,31         |
| HK CPB 045 2020 | 60        | 20        | 100       | 60        | 25        | 20                      | 45                      | 0,36         |
| HK CPB 010 0000 | 70        | 20        | 110       | 65        | 30        | 20                      | 50                      | 0,52         |
| HK CPB 055 2020 | 75        | 20        | 115       | 70        | 30        | 20                      | 55                      | 0,52         |
| HK CPB 020 0000 | 80        | 25        | 130       | 75        | 35        | 25                      | 60                      | 0,79         |
| HK CPB 065 2525 | 90        | 25        | 140       | 85        | 35        | 25                      | 65                      | 0,95         |
| HK CPB 030 0000 | 100       | 30        | 160       | 90        | 45        | 30                      | 70                      | 1,57         |
| HK CPB 073 3030 | 100       | 30        | 160       | 95        | 45        | 30                      | 73                      | 1,60         |
| HK CPB 075 3030 | 100       | 30        | 160       | 95        | 45        | 30                      | 75                      | 1,51         |
| HK CPB 040 0000 | 110       | 35        | 180       | 100       | 50        | 35                      | 80                      | 2,35         |
| HK CPB 090 3535 | 115       | 35        | 185       | 115       | 50        | 35                      | 90                      | 2,21         |
| HK CPB 050 0000 | 115       | 40        | 195       | 115       | 55        | 40                      | 92                      | 2,60         |
| HK CPB 050 1000 | 115       | 40        | 195       | 115       | 55        | 40                      | 95                      | 2,40         |
| HK CPB 100 4040 | 120       | 40        | 200       | 120       | 55        | 40                      | 100                     | 2,46         |
| HK CPB 055 0000 | 125       | 45        | 215       | 125       | 60        | 45                      | 105                     | 3,00         |
| HK CPB 060 0000 | 145       | 50        | 245       | 145       | 70        | 50                      | 115                     | 5,30         |
| HK CPB 125 5050 | 160       | 50        | 260       | 160       | 70        | 50                      | 125                     | 5,60         |
| HK CPB 080 0000 | 170       | 60        | 290       | 170       | 80        | 60                      | 140                     | 7,70         |
| HK CPB 145 6060 | 180       | 60        | 300       | 180       | 80        | 60                      | 145                     | 8,60         |
| HK CPB 160 6060 | 200       | 60        | 320       | 200       | 100       | 60                      | 160                     | 12,80        |
| HK CPB 170 7060 | 210       | 60        | 330       | 205       | 100       | 70                      | 170                     | 13,50        |
| HK CPB 180 8060 | 230       | 60        | 350       | 225       | 105       | 80                      | 180                     | 18,30        |