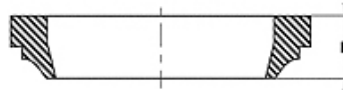
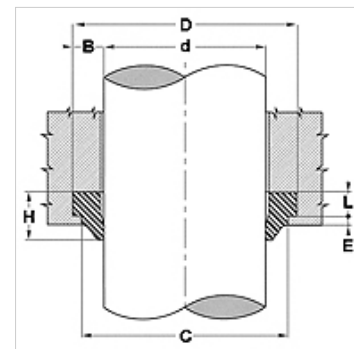


**Caratteristiche**

<b>Tipo</b>	Paraolio
<b>Velocità di scorrimento max.</b>	0,5 m/s
<b>Temperatura min.</b>	-30 °C
<b>Temperatura max.</b>	110 °C
<b>Mezzi</b>	Oli minerali Emulsioni acqua
<b>Montaggio</b>	Sagomare a forma di rene il paraolio e premere per inserirlo nella scanalatura di alloggiamento
<b>Materiale</b>	NBR
<b>Applicazione</b>	Idraulica



Toleranz / Tolerance			
d	D	C	L
h11	H11	H11	+0,20 0



**Descrizione**

semplice montaggio.

**Avvertenza per l'ordinazione**

Possibilità di altri materiali: FPM

**Articolo**

Denominazione	d (mm)	D (mm)	L (mm)	C (mm)	E (mm)
DSR 4	4	12	4,0	10	1,0
DSR 8	8	16	4,0	14	1,0
DSR 10	10	18	4,0	16	1,0
DSR 12	12	20	4,0	18	1,0
DSR 14	14	22	4,0	20	1,0
DSR 15	15	23	4,0	21	1,0
DSR 16	16	24	4,0	22	1,0
DSR 18	18	26	4,0	24	1,0
DSR 20	20	28	4,0	26	1,0
DSR 22	22	30	4,0	28	1,0
DSR 24	24	32	4,0	30	1,0
DSR 25	25	33	4,0	31	1,0
DSR 28	28	36	4,0	34	1,0
DSR 30	30	38	4,0	36	1,0
DSR 32	32	40	4,0	38	1,0
DSR 35	35	43	4,0	41	1,0
DSR 36	36	44	4,0	42	1,0
DSR 38	38	46	4,0	44	1,0
DSR 40	40	48	4,0	46	1,0
DSR 42	42	50	4,0	48	1,0
DSR 45	45	53	4,0	51	1,0
DSR 48	48	56	4,0	54	1,0
DSR 50	50	58	4,0	56	1,0
DSR 52	52	60	4,0	58	1,0
DSR 55	55	63	4,0	61	1,0
DSR 56	56	64	4,0	62	1,0
DSR 60	60	68	4,0	66	1,0
DSR 62	62	70	4,0	68	1,0
DSR 63	63	71	4,0	69	1,0
DSR 65	65	73	4,0	71	1,0
DSR 70	70	78	4,0	76	1,0
DSR 75	75	83	4,0	81	1,0
DSR 80	80	88	4,0	86	1,0
DSR 85	85	93	4,0	91	1,0
DSR 90	90	98	4,0	96	1,0
DSR 95	95	103	4,0	101	1,0
DSR 100	100	108	4,0	106	1,0
DSR 105	105	117	5,5	114	1,5
DSR 110	110	122	5,5	119	1,5
DSR 120	120	132	5,5	129	1,5



**Articolo**

Denominazione	d (mm)	D (mm)	L (mm)	C (mm)	E (mm)
DSR 125	125	137	5,5	134	1,5
DSR 130	130	142	5,5	139	1,5
DSR 140	140	152	5,5	149	1,5
DSR 150	150	162	5,5	159	1,5
DSR 160	160	172	5,5	169	1,5
DSR 170	170	182	5,5	179	1,5
DSR 180	180	192	5,5	189	1,5
DSR 190	190	202	5,5	199	1,5
DSR 200	200	212	5,5	209	1,5
DSR 220	220	235	6,5	231	2,0
DSR 250	250	265	6,5	261	2,0