

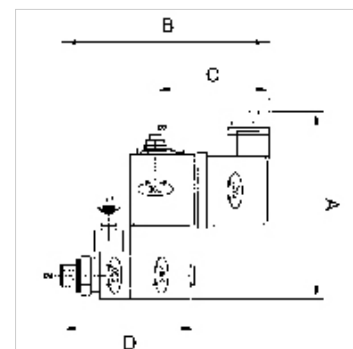
# K-MV 3/2 BANJO

Solenoid valves

**HANSA FLEX**

## Caratteristiche

Temperatura del fluido	max. +60 °C
Attacco	Port 1: Plug connection for hose outside Ø 4 mm; Port 2: G 1/8 thread; Relief port 3: M 5 thread
Esecuzione elettrica	acc. france norm NF C79300
Pressione d'esercizio	max. 10 bar
Temperatura d'esercizio	max. +60 °C
Alloggiamento	Polyamide (glass fibre-reinforced)
Guarnizione	Perbunan (NBR)



## Nota

Altri dati su richiesta.

## Descrizione

Compact solenoid valves for mounting directly on the actuator (single-acting cylinder, valve, etc.). Optimum installation Supply port (1), solenoid valve body, coil and cable socket can be rotated 360°, Manual operator, Exhaust air restrictor available on

## Articolo

Denominazione	Filetto	C (mm)	D (mm)	Tensione	A (mm)	B (mm)
K- 07 30 22 34	G 1/8 male	49,0	58,0	230/50 V	79,0	90,0
K- 07 30 23 07	G 1/8 male	49,0	58,0	24 V DC	79,0	90,0