

# K-VERSCHLUSSKAPPEN RUND

Hexagonal caps, round

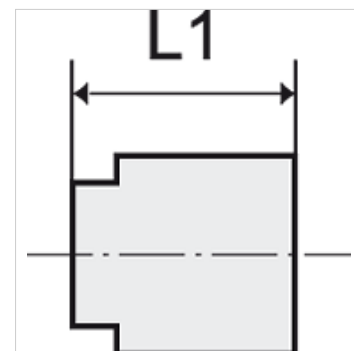
**HANSA FLEX**

## Caratteristiche

Pressione di lavoro Max. 20 bar

Filettatura interna Parallel to DIN EN ISO 228-1

Materiale Stainless steel 1.4408



## Nota

The dimensions of the standard screw fittings may change slightly during the life of the catalogue as a result of optimisation processes.

Altri dati su richiesta.

## Articolo

| Denominazione  | Filetto | L1<br>(mm) | Ø<br>(mm) |
|----------------|---------|------------|-----------|
| K- 07 40 39 31 | G 1/8   | 14,0       | 14,6      |
| K- 07 40 39 32 | G 1/4   | 15,4       | 17,0      |
| K- 07 40 39 33 | G 3/8   | 15,9       | 21,0      |
| K- 07 40 39 34 | G 1/2   | 20,0       | 28,0      |
| K- 07 40 39 35 | G 3/4   | 23,6       | 34,0      |
| K- 07 40 39 36 | G 1     | 28,0       | 40,0      |
| K- 07 40 39 37 | G 1 1/4 | 30,0       | 49,0      |
| K- 07 40 39 38 | G 1 1/2 | 31,2       | 55,0      |
| K- 07 40 39 39 | G 2     | 35,4       | 69,0      |