

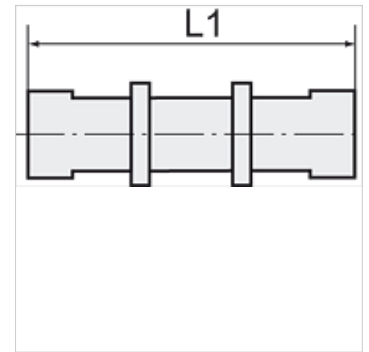
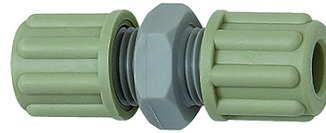
# K-SCHLAUCH VB

Hose connectors

**HANSA FLEX**

## Caratteristiche

<b>Pressione d'esercizio</b>	Dependent on operating temperature; Max. 10 bar (at 20 °C); Max. 1 bar (at 60 °C)
<b>Corpo di avvitamento</b>	Polyamide (PA)
<b>Anello di serraggio</b>	Polypropylene (PP)
<b>Dado</b>	Polypropylene (PP)



## Nota

Altri dati su richiesta.

## Descrizione

Manufactured from high impact-resistant, UV-stabilised engineering plastic, extremely resistant to weathering. Good chemical resistance to benzine, diesel oil, fuel oil and alkalis. <br>Not suitable for use with acids.

## Articolo

Denominazione	per flessibile	L1 (mm)	SW
K- 07 40 32 62	4 mm / 6 mm	39,0	14 mm
K- 07 40 32 63	6 mm / 8 mm	49,0	19 mm
K- 07 40 32 64	8 mm / 10 mm	55,0	22 mm
K- 07 40 32 65	9 mm / 12 mm	64,0	24 mm