

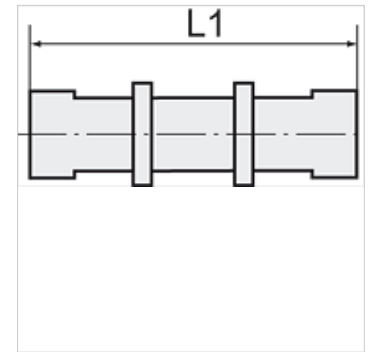
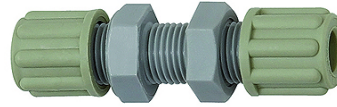
K-SCHOTTVERBINDUNGEN

Bulkhead couplings

HANSA FLEX

Caratteristiche

Pressione d'esercizio	Dependent on operating temperature; Max. 10 bar (at 20 °C); Max. 1 bar (at 60 °C)
Corpo di avvitamento	Polyamide (PA)
Anello di serraggio	Polypropylene (PP)
Dado	Polypropylene (PP)



Nota

Altri dati su richiesta.

Descrizione

Manufactured from high impact-resistant, UV-stabilised engineering plastic, extremely resistant to weathering. Good chemical resistance to benzene, diesel oil, fuel oil and alkalis.
Not suitable for use with acids.

Articolo

Denominazione	Filetto	per flessibile	L1 (mm)	SW
K- 07 40 32 74	M 10 x 1	4 mm / 6 mm	53,0	14 mm
K- 07 40 32 75	M 14 x 1,5	6 mm / 8 mm	64,0	19 mm
K- 07 40 32 76	M 16 x 1,5	8 mm / 10 mm	73,0	22 mm
K- 07 40 32 77	M 18 x 1,5	9 mm / 12 mm	84,0	24 mm