

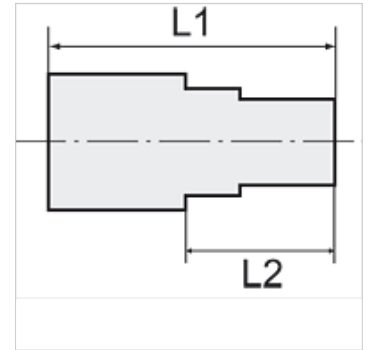
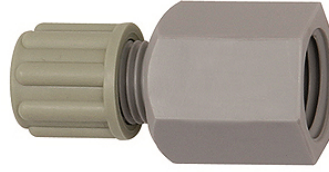
# K-GAR IG

Female connectors with female G thread

**HANSA FLEX**

## Caratteristiche

Pressione d'esercizio	Dependent on operating temperature; Max. 10 bar (at 20 °C); Max. 1 bar (at 60 °C)
Corpo di avvitamento	Polyamide (PA)
Anello di serraggio	Polypropylene (PP)
Dado	Polypropylene (PP)



## Nota

Altri dati su richiesta.

## Descrizione

Manufactured from high impact-resistant, UV-stabilised engineering plastic, extremely resistant to weathering. Good chemical resistance to benzene, diesel oil, fuel oil and alkalis. <br>Not suitable for use with acids.

## Articolo

Denominazione	Filetto	per flessibile	L1 (mm)	L2 (mm)	SW
K- 07 40 32 46	G 1/8	4 mm / 6 mm	31,0	17,0	14 mm
K- 07 40 32 47	G 1/8	6 mm / 8 mm	36,0	21,0	17 mm
K- 07 40 32 48	G 1/8	8 mm / 10 mm	39,0	24,0	19 mm
K- 07 40 32 49	G 1/8	9 mm / 12 mm	43,0	28,0	22 mm
K- 07 40 32 50	G 1/4	4 mm / 6 mm	36,0	17,0	17 mm
K- 07 40 32 51	G 1/4	6 mm / 8 mm	41,0	21,0	17 mm
K- 07 40 32 52	G 1/4	8 mm / 10 mm	44,0	24,0	19 mm
K- 07 40 32 53	G 1/4	9 mm / 12 mm	48,0	28,0	22 mm
K- 07 40 32 54	G 3/8	4 mm / 6 mm	36,0	17,0	22 mm
K- 07 40 32 55	G 3/8	6 mm / 8 mm	41,0	21,0	22 mm
K- 07 40 32 56	G 3/8	8 mm / 10 mm	44,0	24,0	22 mm
K- 07 40 32 57	G 3/8	9 mm / 12 mm	48,0	28,0	22 mm
K- 07 40 32 58	G 1/2	4 mm / 6 mm	38,0	17,0	27 mm
K- 07 40 32 59	G 1/2	6 mm / 8 mm	42,0	21,0	27 mm
K- 07 40 32 60	G 1/2	8 mm / 10 mm	44,0	24,0	27 mm
K- 07 40 32 61	G 1/2	9 mm / 12 mm	49,0	28,0	27 mm