

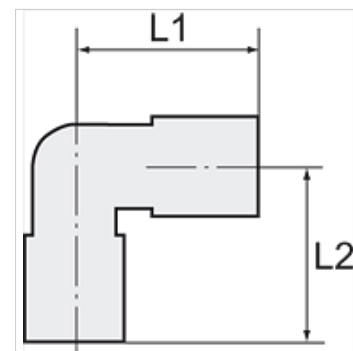
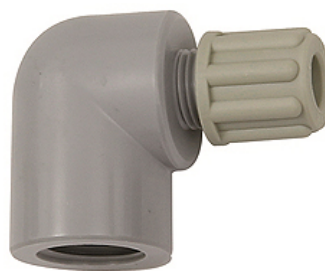
K-W90 GAM IG

Female elbows with female G thread

HANSA FLEX

Caratteristiche

| | |
|------------------------------|---|
| Pressione d'esercizio | Dependent on operating temperature; Max. 10 bar (at 20 °C); Max. 1 bar (at 60 °C) |
| Corpo di avvitamento | Polyamide (PA) |
| Anello di serraggio | Polypropylene (PP) |
| Dado | Polypropylene (PP) |



Nota

Altri dati su richiesta.

Descrizione

Manufactured from high impact-resistant, UV-stabilised engineering plastic, extremely resistant to weathering. Good chemical resistance to benzene, diesel oil, fuel oil and alkalis.
Not suitable for use with acids.

Articolo

| Denominazione | Filetto | per flessibile | L1 (mm) | L2 (mm) |
|----------------|---------|----------------|------------|------------|
| K- 07 40 32 98 | G 1/8 | 4 mm / 6 mm | 26,0 | 17,0 |
| K- 07 40 32 99 | G 1/8 | 6 mm / 8 mm | 29,0 | 17,0 |
| K- 07 40 33 00 | G 1/4 | 4 mm / 6 mm | 29,0 | 20,0 |
| K- 07 40 33 01 | G 1/4 | 6 mm / 8 mm | 32,0 | 20,0 |
| K- 07 40 33 02 | G 1/4 | 8 mm / 10 mm | 35,0 | 20,0 |