

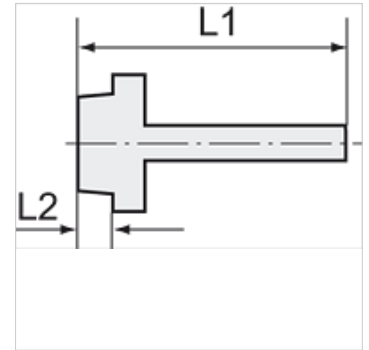
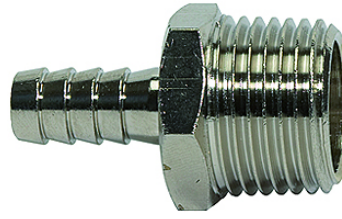
K-TR AG-K VALUE LINE MS NI

Male hose fittings, conical male thread

HANSA FLEX

Caratteristiche

pressione d'esercizio max.	60 bar
temperatura d'esercizio max.	150 °C
Materiale	Ottone nichelato



Nota

The dimensions of the standard screw fittings may change slightly during the life of the catalogue as a result of optimisation processes.
Altri dati su richiesta.

Descrizione

For air, water, steam, oil, etc.

Articolo

Denominazione	Filetto	per flessibile	L1 (mm)	L2 (mm)	SW
K- 07 40 14 04	R 1/8	LW 6 mm	31,5	8,0	12 mm
K- 07 40 14 05	R 1/8	LW 8 mm	31,5	8,0	12 mm
K- 07 40 14 06	R 1/8	LW 9 mm	31,5	8,0	12 mm
K- 07 40 14 07	R 1/8	LW 10 mm	32,5	8,0	12 mm
K- 07 40 14 08	R 1/4	LW 6 mm	35,0	11,0	14 mm
K- 07 40 14 09	R 1/4	LW 8 mm	35,0	11,0	14 mm
K- 07 40 14 10	R 1/4	LW 9 mm	35,0	11,0	14 mm
K- 07 40 14 11	R 1/4	LW 10 mm	36,0	11,0	14 mm
K- 07 40 14 12	R 1/4	LW 12 mm	36,0	11,0	14 mm
K- 07 40 14 13	R 3/8	LW 9 mm	35,5	11,5	17 mm
K- 07 40 14 14	R 3/8	LW 10 mm	36,5	11,5	17 mm
K- 07 40 14 15	R 3/8	LW 12 mm	36,5	11,5	17 mm
K- 07 40 14 16	R 1/2	LW 9 mm	38,5	14,0	22 mm
K- 07 40 14 17	R 1/2	LW 10 mm	39,5	14,0	22 mm
K- 07 40 14 18	R 1/2	LW 12 mm	39,5	14,0	22 mm