

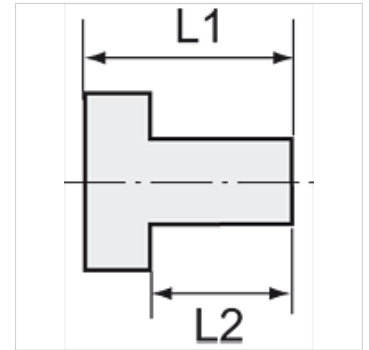
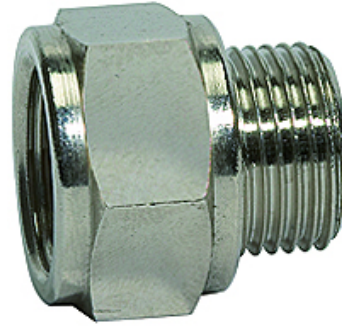
# K-VERL STUECK VALUE LINE MS NI

Extensions

**HANSA FLEX**

## Caratteristiche

pressione d'esercizio max.	60 bar
temperatura d'esercizio max.	150 °C
Materiale	Ottone nichelato



## Nota

The dimensions of the standard screw fittings may change slightly during the life of the catalogue as a result of optimisation processes.  
Altri dati su richiesta.

## Descrizione

For air, water, steam, oil, etc.

## Articolo

Denominazione	Filettatura esterna	Filettatura interna	L1 (mm)	L2 (mm)	SW
K- 07 40 39 23	M 5	G 1/8	14,5	4,0	14 mm
K- 07 40 39 24	G 1/8	G 1/8	16,0	6,0	14 mm
K- 07 40 39 25	G 1/8	G 1/4	19,5	6,0	17 mm
K- 07 40 39 26	G 1/4	G 1/4	21,5	8,0	17 mm
K- 07 40 39 27	G 1/4	G 3/8	22,5	8,0	22 mm
K- 07 40 39 28	G 3/8	G 3/8	23,5	9,0	22 mm
K- 07 40 39 29	G 3/8	G 1/2	27,0	9,0	24 mm
K- 07 40 39 30	G 1/2	G 1/2	28,0	10,0	26 mm