

K-HS ALU BLAU

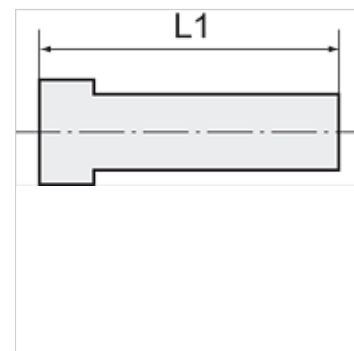
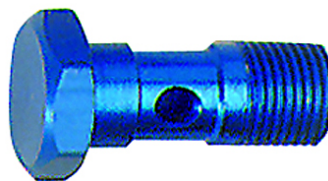
Aluminium banjo bolts

HANSA FLEX

Caratteristiche

Pressione d'esercizio 0 - 10 bar

Campo della temperatura: -10 °C to +60 °C



Nota

Altri dati su richiesta.

Articolo

Denominazione	Filetto	L1 (mm)	SW
K- 07 40 33 45	G 1/8	27,0	14 mm
K- 07 40 33 46	G 1/4	29,0	17 mm