

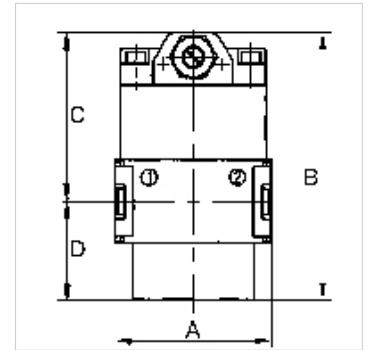
# K-ANFAV MULTIFIX MINI

Start-up valves

**HANSA FLEX**

## Caratteristiche

Pressione d'ingresso	Min. 2.5 bar, max. 16 bar
Temperatura del fluido	max. 60 °C
Temperatura ambiente	Max. 60 °C
Portata	1600 l/min
Materiale di tenuta	NBR
Alloggiamento	Die-cast zinc
Misurazione del valore della portata	At P1 = 6 bar and pressure drop $\Delta p = 1$ bar



## Nota

If several devices in the »multifix-mini« Series are assembled together, the maximum working pressure is 12 bar.  
Altri dati su richiesta.

## Descrizione

Seat valves operated by secondary pressure for controlled pressurisation of pneumatic systems. The full cross-section of the regulator is opened at 50% of the input pressure. With adjustable restrictor!

## Articolo

Denominazione	Filetto	A (mm)	B	C (mm)	D (mm)
K- 07 25 11 53	G 1/4	45,0	77,5 mm	48,5	29,0

## Accessori

K-HALTERBAUSATZ Holder

## Parti di ricambio

K-KOPPELPAKET MEHR Coupling packet