

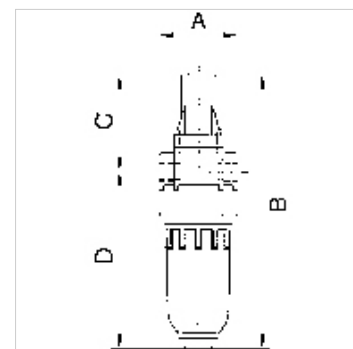
# K-NEBELOE METALLBEHAE T STANDARD-M'

Oil-mist lubricators with metal bowl and metal sight dome

**HANSA FLEX**

## Caratteristiche

<b>Pressione d'ingresso</b>	Max. 16 bar (polycarbonate bowl), Max. 25 bar (metal bowl)
<b>Temperatura del fluido</b>	max. 60 °C
<b>Temperatura ambiente</b>	Max. 60 °C
<b>Portata</b>	650 l/min
<b>Materiale di tenuta</b>	NBR
<b>Alloggiamento</b>	Die-cast zinc, painted silver
<b>Contagocce</b>	PA (polycarbonate bowl), Zinc-glass-NBR (metal bowl)
<b>Tipo di olio</b>	CL 32 acc. to DIN 51517 - ISO VG 32
<b>Misurazione del valore della portata</b>	At P1 = 6 bar and pressure drop $\Delta p = 1$ bar
<b>Altri dati</b>	User manual on request



## Descrizione

Proportional lubricators in compact design, oil can be filled under pressure.

## Articolo

Denominazione	Filetto	A (mm)	B	C (mm)	D (mm)	DN
K- 07 25 08 84	G 1/8	40,0	141,0 mm	49,0	92,0	5
K- 07 25 08 86	G 1/4	40,0	141,0 mm	49,0	92,0	5

## Parti di ricambio

<b>K-ERSATZBEHAELTER MULTI MINI</b>	Spare tank »multifix-mini« & »standard-mini«
<b>K-TROPFAUFSATZ POLYCARBO</b>	Drip attachment polycarbonate
<b>K-TROPFAUFSATZ METALL</b>	Drip attachment metal
<b>K-LOESBARE DOPPELNIPPEL MS</b>	Double nipples
<b>K-XV AGM MS NI</b>	Double nipples, parallel male thread, nickel-plated brass