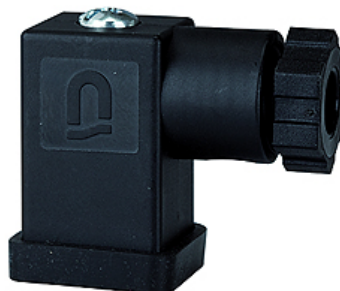


K-GERAETESTECKER FORM C

Connector

HANSA FLEX



Descrizione

Connector

Articolo

Denominazione	Descrizione	Dimensioni strutturali
K- 07 25 18 08	Connector	1

è una parte di ricambio dei seguenti prodotti

K-WV 3/2 ELK 24 VDC HANSA	3/2-way valves, electrically operated, with 24 VDC / 2.5 W solenoid
K-WV 3/2 ELK 230 VAC / 50HZ HANSA	3/2-way valves, electrically operated, with 230 VAC / 50 Hz solenoid
K-BEFUELLEINHEIT 24VDC HANSA	Filling units, electrically operated, with 24 VDC / 2.5 W solenoid, adjustable filling time
K-BEFUELLEINHEIT 230V AC HANSA	Filling units, electrically operated, with 230 VAC / 5= Hz solenoid, adjustable filling time