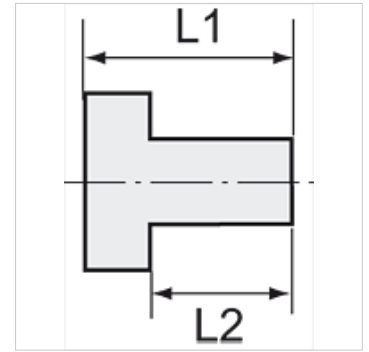


# K-VHR IS BUND MS NI

Hexagon socket screw plugs with collar

## Caratteristiche

Temperatura d'esercizio	Max. 150 °C
Pressione	Max. 60 bar
Tipo	Vite di chiusura a testa esagonale interna
Materiale	Ottone nichelato



## Nota

The dimensions of the standard screw fittings may change slightly during the life of the catalogue as a result of optimisation processes. Altri dati su richiesta.

## Descrizione

Suitable for air, water, oil, steam, etc.

## Informazioni supplementari

Further types and dimensions on request.

## Articolo

Denominazione	Filetto	L1 (mm)	L2 (mm)	SW
K- 07 40 45 18	G 1/8	11,0	8,0	5 mm
K- 07 40 45 19	G 1/4	13,0	10,0	6 mm
K- 07 40 45 20	G 3/8	15,0	12,0	8 mm
K- 07 40 45 27	G 1/2	18,0	14,0	10 mm
K- 07 40 45 23	G 3/4	24,0	20,0	12 mm
K- 07 40 45 26	G 1	27,0	22,0	17 mm