

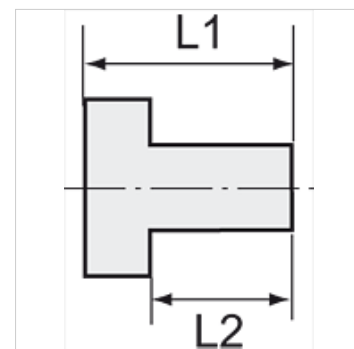
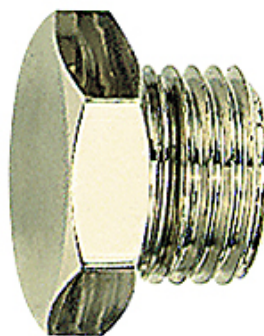
K-VHR 6KT MS NI

Hexagon head screw plugs

HANSA FLEX

Caratteristiche

Temperatura d'esercizio	Max. 150 °C
Pressione	Max. 60 bar
Tipo	Viti di chiusura a testa esagonale esterna,
Materiale	Ottone nichelato



Nota

The dimensions of the standard screw fittings may change slightly during the life of the catalogue as a result of optimisation processes.
Altri dati su richiesta.

Descrizione

Suitable for air, water, oil, steam, etc.

Informazioni supplementari

Further types and dimensions on request.

Articolo

Denominazione	Filetto	L1 (mm)	L2 (mm)	SW
K- 07 40 39 97	M 5	7,0	4,0	8 mm
K- 07 40 39 98	G 1/8	10,0	6,0	14 mm
K- 07 40 39 99	G 1/4	12,5	8,0	17 mm
K- 07 40 40 00	G 3/8	13,5	9,0	19 mm
K- 07 40 40 01	G 1/2	15,5	10,0	24 mm
K- 07 40 40 02	G 3/4	16,5	11,0	30 mm
K- 07 40 39 96	G 1	19,0	13,0	38 mm