

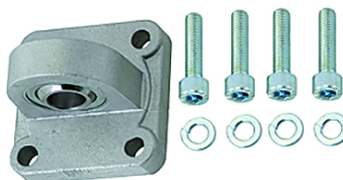
# K-SPHAERISCHE SCHWENKAUGENB

Articulated male hinge model

**HANSA FLEX**

## Caratteristiche

Norma ISO 15552



## Articolo

Denominazione	Ø pistone	Esecuzione
K- 07 15 22 11	32 mm	With four screws and four washers
K- 07 15 22 12	40 mm	With four screws and four washers
K- 07 15 22 13	50 mm	With four screws and four washers
K- 07 15 22 14	63 mm	With four screws and four washers
K- 07 15 22 15	80 mm	With four screws and four washers
K- 07 15 22 16	100 mm	With four screws and four washers
K- 07 15 22 17	125 mm	With four screws and four washers

## è un accessorio dei seguenti prodotti

K-NORMZYLINDER Standard cylinders