

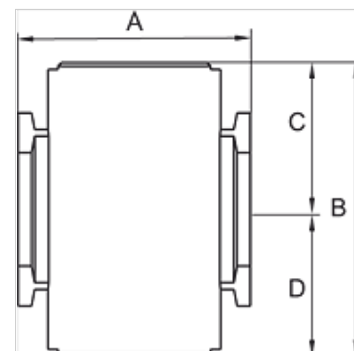
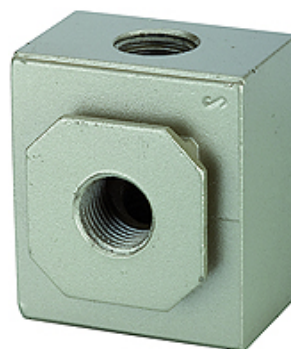
K-VT 2 ABGAENGE G

Manifolds

HANSA FLEX

Caratteristiche

Pressione d'ingresso	0 - 9 bar
Temperatura del fluido	max. 70 °C
Temperatura ambiente	Max. 70 °C
Materiale di tenuta	NBR
Alloggiamento	Die-cast aluminium
Altri dati	User manual on request



Articolo

Denominazione	Filetto	A (mm)	B	C (mm)	D (mm)	Dimensioni strutturali
K- 07 25 12 19	G 1/4	35,0	44,0 mm	22,0	22,0	200
K- 07 25 12 20	G 3/8	35,0	44,0 mm	22,0	22,0	200
K- 07 25 12 21	G 3/8	42,0	52,0 mm	26,0	26,0	300
K- 07 25 12 22	G 1/2	42,0	52,0 mm	26,0	26,0	300
K- 07 25 12 23	G 3/4	60,0	76,0 mm	38,0	38,0	600
K- 07 25 12 24	G 1	60,0	76,0 mm	38,0	38,0	600

Accessori

K-VERBINDUNGELEMENTE	Connecting sets
K-WANDHALTER	Wall bracket