

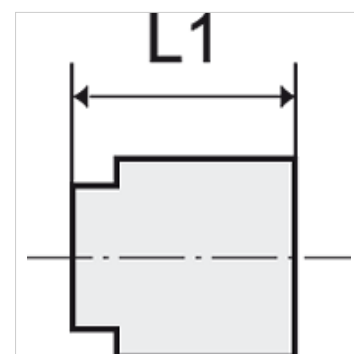
# K-VERSCHLUSSKAPPEN 10 BAR

Hexagonal caps (pressure max. 10 bar)

**HANSA FLEX**

## Caratteristiche

<b>Pressione di lavoro</b>	Max. 15 bar, coarse vacuum
<b>Campo di impiego</b>	Air, vacuum
<b>Tubi flessibili consigliati</b>	PU or PA (nylon)
<b>Mezzi</b>	Compressed air and all gases or liquids that are compatible with the materials
<b>Campo della temperatura:</b>	-20 °C to +80 °C
<b>Superficie di tenuta</b>	Parallel version: O-ring in housing, Conical version: thread coating
<b>Materiale</b>	Plastic, Nickel plated brass
<b>Anello di compressione</b>	Plastic



## Nota

Altri dati su richiesta.

## Descrizione

Push-in fittings series manufactured in plastic and nickel-plated brass. All parts are suitable for use with hoses, tubes or pipes made of plastic and copper.

## Articolo

Denominazione	per diametro esterno del tubo flessibile Ø mm	L1 (mm)
K- 07 40 42 96	3 mm	16,0
K- 07 40 42 97	4 mm	16,0
K- 07 40 42 98	6 mm	20,0
K- 07 40 42 99	8 mm	21,0
K- 07 40 43 00	10 mm	22,0
K- 07 40 43 01	12 mm	23,0
K- 07 40 43 02	16 mm	25,0