

K-VT 2 ABGAENGE G-MINI

Manifolds

HANSA FLEX

Caratteristiche

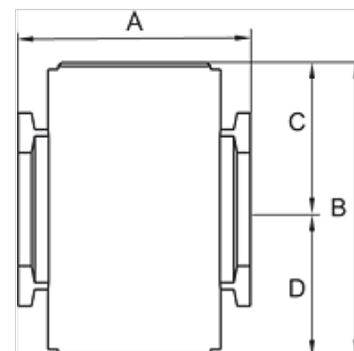
Pressione d'ingresso 0 - 9 bar

Temperatura del fluido max. 70 °C

Temperatura ambiente Max. 70 °C

Alloggiamento Die-cast aluminium

Altri dati User manual on request



Articolo

Denominazione	Filetto	A (mm)	B	C (mm)	D (mm)	Dimensioni strutturali
K- 07 25 12 31	G 1/8	28,5	36,0 mm	18,0	18,0	200
K- 07 25 12 32	G 1/4	28,5	36,0 mm	18,0	18,0	200

Accessori

K-VERBINDUNGELEMENTE Connecting sets

K-WANDHALTER Wall bracket