

# K-XVM ZYL OR FKM

Male connectors, parallel male thread with FPM O-ring

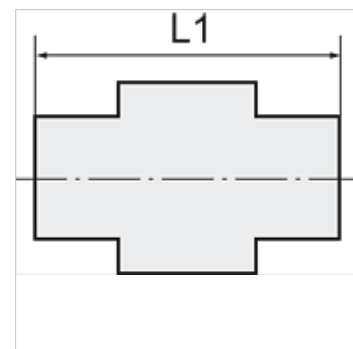
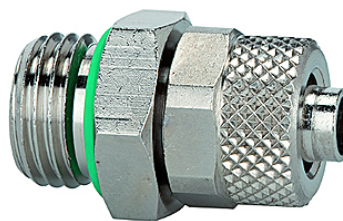
**HANSA FLEX**

## Caratteristiche

Pressione di lavoro Max. 18 bar

Materiale di tenuta Buna-N

Materiale Ottone nichelato



## Nota

Altri dati su richiesta.

## Articolo

| Denominazione  | Filetto | per flessibile | L1<br>(mm) | SW    |
|----------------|---------|----------------|------------|-------|
| K- 07 40 30 83 | G 1/8   | 6 mm / 4 mm    | 25,0       | 15 mm |
| K- 07 40 30 85 | G 1/8   | 8 mm / 6 mm    | 25,0       | 15 mm |
| K- 07 40 30 77 | G 1/4   | 6 mm / 4 mm    | 27,0       | 18 mm |
| K- 07 40 30 79 | G 1/4   | 8 mm / 6 mm    | 27,0       | 18 mm |
| K- 07 40 30 75 | G 1/4   | 10 mm / 8 mm   | 29,0       | 18 mm |