

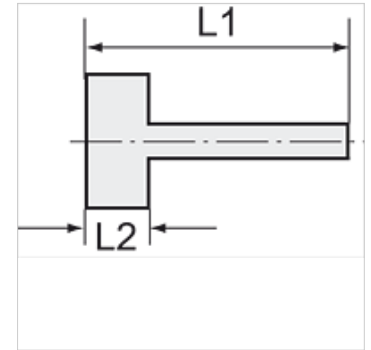
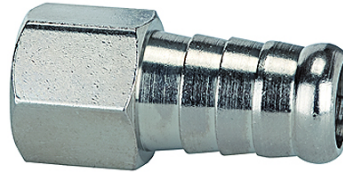
K-TUE IG MS NI

Female stems with parallel female thread - nickel-plated brass

HANSA FLEX

Caratteristiche

Temperatura d'esercizio	Max. 150 °C
Pressione	Max. 60 bar
Materiale	Ottone nichelato



Nota

The dimensions of the standard screw fittings may change slightly during the life of the catalogue as a result of optimisation processes.
Altri dati su richiesta.

Descrizione

Suitable for air, water, oil, steam, etc.

Informazioni supplementari

Further types and dimensions on request.

Articolo

Denominazione	Filetto	per flessibile	L1 (mm)	L2 (mm)	SW
K- 07 40 11 76	G 1/8	LW 6 mm	28,0	8,5	12 mm
K- 07 40 11 77	G 1/8	LW 8 mm	28,0	8,5	12 mm
K- 07 40 11 78	G 1/8	LW 9 mm	28,0	8,5	12 mm
K- 07 40 11 79	G 1/8	LW 10 mm	28,0	8,5	12 mm
K- 07 40 11 80	G 1/4	LW 6 mm	33,0	10,0	15 mm
K- 07 40 11 81	G 1/4	LW 8 mm	33,0	10,0	15 mm
K- 07 40 11 82	G 1/4	LW 9 mm	33,0	10,0	15 mm
K- 07 40 11 83	G 1/4	LW 10 mm	33,0	10,0	15 mm
K- 07 40 11 84	G 1/4	LW 12 mm	33,0	10,0	15 mm
K- 07 40 11 85	G 3/8	LW 8 mm	35,0	12,0	19 mm
K- 07 40 11 86	G 3/8	LW 10 mm	35,0	12,0	19 mm
K- 07 40 11 87	G 3/8	LW 12 mm	35,0	12,0	19 mm
K- 07 40 11 88	G 3/8	LW 14 mm	35,0	12,0	19 mm
K- 07 40 11 89	G 1/2	LW 10 mm	38,0	14,0	25 mm
K- 07 40 11 90	G 1/2	LW 12 mm	41,0	14,0	25 mm
K- 07 40 11 91	G 1/2	LW 14 mm	41,0	14,0	25 mm