

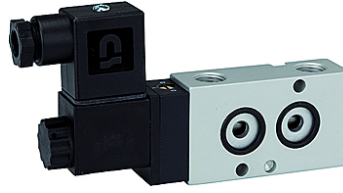
K-WV 3/2 LB NAMUR GETAUSCHT

3/2-way spool valves with NAMUR style interface, NC, ports 1 and 3 or 2 and 3 swapped

HANSA FLEX

Caratteristiche

Mezzi	Air, neutral gases, filtered
Pressione di lavoro	1.5 to 10 bar
Temperatura d'esercizio	-20 °C to +70 °C
Collegamento elettrico	Plug connector PG 9
In dotazione	Plug connector PG 9, 1 coding pin, 2 O-rings, 2 fixing screws
Potenza assorbita	3 W=/5 VA~
Alloggiamento	Aluminium, anodised
Valvola a cursore	Stainless steel
Materiale di tenuta	NBR



Nota

Altri dati su richiesta.

Descrizione

3/2 and 5/2-way spool valves, monostable, with air purging function and pneumatic spring return. With latching manual operator and optional outgoing air restriction.

Two or three-piece service units with excellent flow rates in modern design.
Lockable diaphragm pressure regulator with secondary ventilation, oil can be filled without interrupting operation.

Articolo

Denominazione	Tensione	Attacco	DN	Portata (L/min)
K- 07 15 00 05	230 V, 50 Hz	G 1/4	7	1250
K- 07 15 00 06	24 V DC	G 1/4	7	1250