

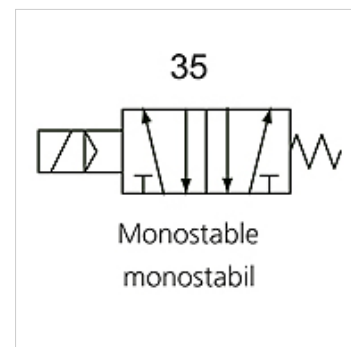
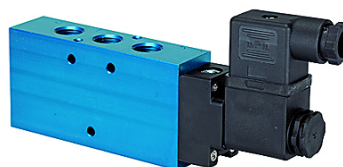
K-WV 5/2 EINS ELEKTRO

5/2-way spool valves, single solenoid

HANSA FLEX

Caratteristiche

Funzione	5/2-way
Pressione d'esercizio	2.5 - 10 bar; Max. vacuum 10 bar (external pilot air)
pressione di lavoro min.	2,5 bar
Campo della temperatura:	-10 °C to +60 °C
Portata 6 bar e 10 bar	1500 NI/min (G 1/4), 4600 NI/min (G 1/2)
Collegamento elettrico	Coupler plug PG 9 - form B
Grado di protezione	IP 65 (DIN 46244)
Alloggiamento	Anodised aluminium, blue
Slitta pistone	Stainless steel
Materiale di tenuta	NBR



Nota

Altri dati su richiesta.

Descrizione

This valve design, featuring the Tapered Tee Seal®, offers the ability to run without lubrication and supports almost any compressed air quality. The valves are largely resistant to dirt and can thus also be used under extreme conditions without any problems. Leakage is now a thing of the past and the spool no longer sticks, even after long idle periods.

Articolo

Denominazione	Attacco	Tensione	DN	Numero schema	Comando
K- 07 15 02 21	G 1/4	24 V DC	8	35	
K- 07 15 02 22	G 1/2"	24 V DC	15	35	
K- 07 15 02 23	G 1/4	230 V AC, 50 Hz	8	35	
K- 07 15 02 24	G 1/2"	230 V AC, 50 Hz	15	35	