

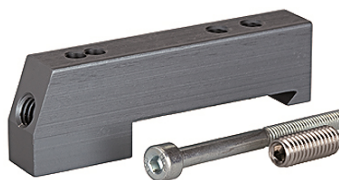
K-ADA HUTPROFIL

Adapter for DIN rail

HANSA FLEX

Caratteristiche

Mezzi	Filtered, unlubricated or lubricated compressed air. If lubrication is used, it must be continuous.
Pressione di lavoro	Max. vacuum 10 bar (external pilots), 3 to 7 bar (internal pilots as standard)
Pressione di comando	3 - 7 bar
Campo della temperatura:	-10 °C to +60 °C
Portata	200 NI/min (Ø 4), 500 NI/min (Ø 6), 800 NI/min (Ø 8)
Numero di comandi	Max. 16 (e.g. 16 spring return valves)
Azionamento ausiliario manuale	Latching (bistable), Monostable (non-latching) version also available on request
Potenza assorbita	0.6 W per pilot
Grado di protezione	IP 65



Nota

Altri dati su richiesta.

Descrizione

These compact valve terminals, with a maximum flow rate of 800 NI/min, can be individually adapted to the specific conditions of each application thanks to the wide range of functions and various input and intermediate plates. Since each valve terminal is a customer-specific combination of a series of individual elements, the catalogue only lists the available input, intermediate and end plates as well as the different valve discs and the 25-pin multi-pole connectors.

Informazioni supplementari

Important: The scope of supply does not include a connector. Please order separately.

Articolo

Denominazione	Definizione
K- 07 15 22 43	Adapter for DIN rail