

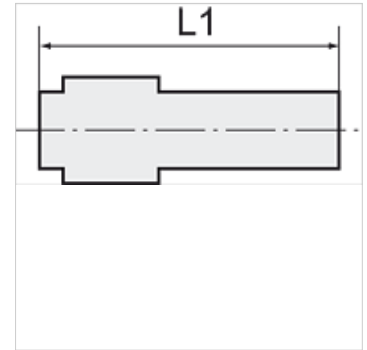
K-RD STUECKE PP

Reducers

HANSA FLEX

Caratteristiche

Pressione di lavoro	on request
Temperatura d'esercizio	Max. +20 °C
Materiale	Polypropylene (PP)
Materiale di tenuta	NBR



Nota

Altri dati su richiesta.

Descrizione

Lightweight, push-in fittings distinguished by high strength, toughness, resistance to abrasion and impact resistance - ideal for a wide range of applications. Plastic and metal tubes are connected together quickly and easily. Suitable for compressed air or liquids, with good resistance to a large number of chemicals.

Articolo

Denominazione	per diametro esterno del tubo flessibile Ø mm	L1 (mm)	Manicotto (mm)
K- 07 40 29 00	22 mm	127,0	32
K- 07 40 29 01	28 mm	133,3	32