

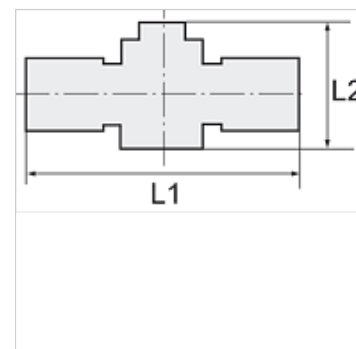
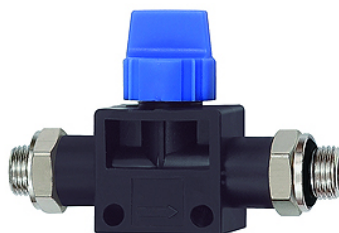
# K-WV 3/2 AG OR

3/2-way pilot valves with parallel male thread with O-ring

**HANSA FLEX**

## Caratteristiche

<b>Pressione di lavoro</b>	Max. 15 bar, coarse vacuum
<b>Campo di impiego</b>	Air, vacuum
<b>Tubi flessibili consigliati</b>	PU or PA (nylon)
<b>Mezzi</b>	Compressed air and all gases or liquids that are compatible with the materials
<b>Campo della temperatura:</b>	-20 °C to +80 °C
<b>Superficie di tenuta</b>	Parallel version: O-ring in housing, Conical version: thread coating
<b>Materiale</b>	Plastic, Nickel plated brass
<b>Anello di compressione</b>	Plastic



## Nota

Altri dati su richiesta.

## Descrizione

Push-in fittings series manufactured in plastic and nickel-plated brass. All parts are suitable for use with hoses, tubes or pipes made of plastic and copper.

## Articolo

Denominazione	Filettatura 1	Filettatura 2	L1 (mm)	L2 (mm)
K- 07 40 46 28	G 1/8	G 1/8	65,0	41,5
K- 07 40 46 27	G 1/4	G 1/4	68,0	41,5
K- 07 40 46 29	G 3/8	G 3/8	81,5	46,0