

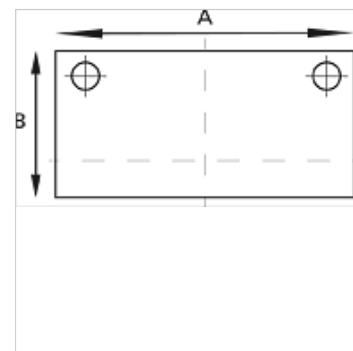
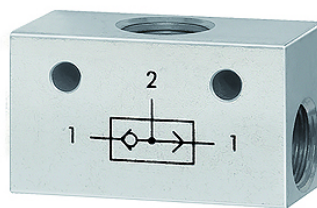
# K-ODER-VENTIL

OR valves

**HANSA FLEX**

## Caratteristiche

Pressione d'esercizio	2 - 10 bar
Campo della temperatura:	-10 °C to +80 °C
Portata a 6,3 bar e Δ 1 bar	500 NI/min (G 1/8), 1300 NI/min (G 1/4)
Corpo valvola	Alluminio
Sfera	Stainless steel
Guarnizioni di tenuta	NBR



## Nota

Altri dati su richiesta.

## Descrizione

The valve has two inlets and one outlet. A signal appears at the outlet when the left or right inlet is pressurised. <br>If the pressure at the two inlets is different, the stronger of the two signals appears at the outlet.

## Articolo

Denominazione	Filetto	A (mm)	B (mm)
K- 07 15 26 05	3 x G 1/8	36,0	20,0
K- 07 15 26 04	3 x G 1/4	43,0	25,0