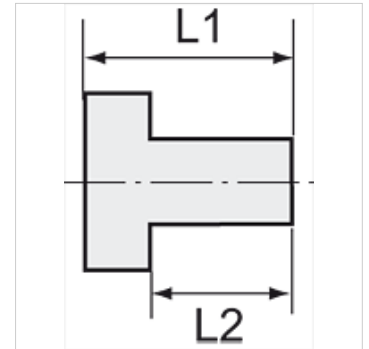
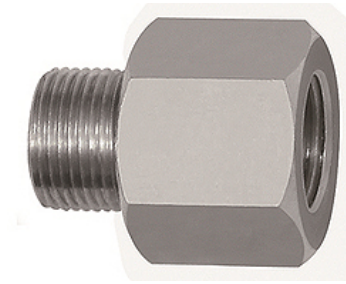


# K-GEWINDEADAPTER

Thread adapter for the use of safety nozzles with connection  
M12x1,25

**HANSA FLEX**



## Articolo

| Denominazione  | Filettatura esterna | Filettatura interna | L1<br>(mm) | L2<br>(mm) | SW<br>(mm) |
|----------------|---------------------|---------------------|------------|------------|------------|
| K- 07 25 19 75 | 1/2" - 27 UNS       | M 12 x 1.25         | 25,0       | 9,0        | 17         |