

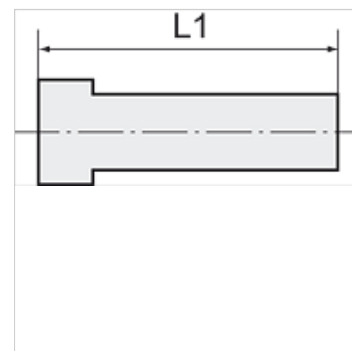
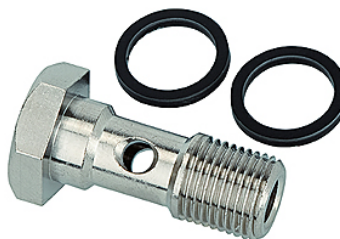
# K-HS EINFACH

Banjo bolts, single

**HANSA FLEX**

## Caratteristiche

Pressione di lavoro	Max. 16 bar
Temperatura d'esercizio	-20 °C to +70°C
Materiale	Ottone nichelato



## Nota

Altri dati su richiesta.

## Articolo

Denominazione	Filetto	L1 (mm)	SW
K- 07 40 26 72	M 5	17,5	8 mm
K- 07 40 26 74	G 1/8	28,0	14 mm
K- 07 40 26 73	G 1/4	33,0	17 mm
K- 07 40 26 75	G 3/8	36,0	19 mm