

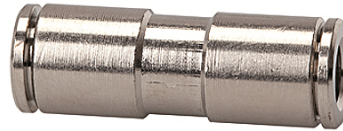
K-STECKVERBINDU 2

Straight push-in connector

HANSA FLEX

Caratteristiche

Pressione di lavoro	Max. 16 bar
Temperatura d'esercizio	-20 °C to +150 °C
Materiale	Ottone nichelato
Anello di compressione	Nickel-plated brass
Anello elastico	Stainless steel



Nota

Altri dati su richiesta.

Descrizione

Push-in fittings, manufactured entirely in nickel-plated brass. All parts with a parallel thread are supplied with an FPM O-ring. All parts with conical threads are coated with preCOTE 5 dispersion, all fittings in this series can thus also be used at high temperatures (medium compressed air).

Articolo

Denominazione	per diametro esterno del tubo flessibile Ø mm	L1 (mm)
K- 07 40 27 49	4 mm	31,0
K- 07 40 27 50	6 mm	33,0
K- 07 40 27 51	8 mm	37,0
K- 07 40 27 52	10 mm	39,0
K- 07 40 47 74	12 mm	43,0
K- 07 40 40 91	14 mm	47,5