

K-ELKT SIGNALGEBER D

Solid state sensor D

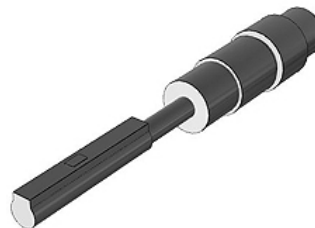
HANSA FLEX

Caratteristiche

Ingresso elettrico axial

Lunghezza cavo 3 m

Serie D



Descrizione

Electronic transducer, series D-M9P, round profile groove, version: with LED, electrical input port axial, 3-wire PNP, with 3.0 m cable

Articolo

Denominazione	Esecuzione	Definizione
K- 07 50 00 03	with LED, with grommet, without connector	electronic signaler
K- 07 50 00 04	with LED, with M8 connector (3 pin)	electronic signaler
K- 07 50 00 05	with LED, with grommet, without connector	electronic signaler