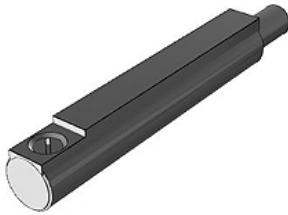


# K-REED-SCHALTER D

Reed switch D



Caratteristiche	
Ingresso elettrico	axial
Lunghezza cavo	3 m
Serie	D



## Descrizione

Reed switch, series D-A93, direct mounting in round profile groove, version: electrical input port axial, with LED, with cast-in cable, cable length 3.0 m

Articolo		
Denominazione	Esecuzione	Definizione
K- 07 50 00 01	with LED, with grommet, without connector	Reed-switch
K- 07 50 00 02	with LED, with M8 connector (3 pin)	Reed-switch