

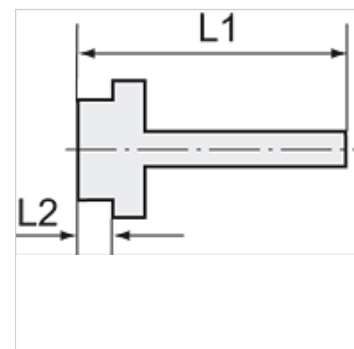
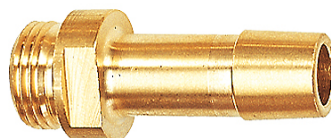
K-EST 12 MS

Male stems for coupling NW12 MS

HANSA FLEX

Caratteristiche

Pressione di lavoro	10 bar
Temperatura del fluido	max. +90 °C
Temperatura ambiente	Max. +90 °C
Materiale	Brass with a bare metal surface



Nota

The dimensions of the standard screw fittings may change slightly during the life of the catalogue as a result of optimisation processes.
Altri dati su richiesta.

Informazioni supplementari

Further types and dimensions on request.

Articolo

Denominazione	Filetto	per flessibile	L1 (mm)	L2 (mm)	SW
K- 07 35 00 88	G 1/2	LW 16 mm	58,0	10,0	20 mm