

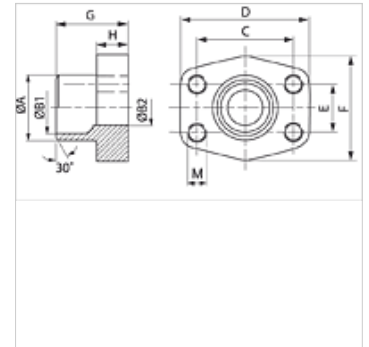
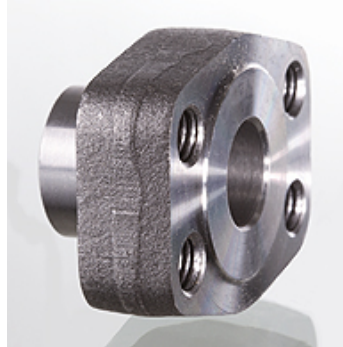
GFS STRE (3000 PSI)

SAE privirinamas priešinis flanšas

HANSA FLEX

Savybės

| | |
|-----------------------|------------------------------------|
| Slėgio serija | 3000 psi |
| Norma | SAE J 518 C ISO 6162 |
| Konstrukcijos priedas | ND 40 |
| Gaminio forma | tiesus |
| Konstrukcija | SAE priešinis privirinamas flanšas |
| Tvirtinimas | vidinis sriegis metr. varžtams |
| Medžiaga | S355J2G3 (ST52.3) |
| Paviršiaus apsauga | suteptas juodu tepalu |



Nuoroda

Nurodytas maksimalus darbinis slėgis nurodomas priklausomai nuo flanšo! Tikrąjį darbinį slėgį reikia nustatyti pagal vamzdį (sienelės storį) ir jo kokybę!

Prekė

| Pavadinimas | PB 10.9 (bar) | Gaminio dydis | Vamzdis | A (mm) | B1 (mm) | B2 (mm) | G (mm) | C (mm) | D (mm) | E (mm) | F (mm) | H (mm) | M metr. |
|--------------------------|------------------|---------------|-------------|-----------|------------|------------|-----------|-----------|-----------|-----------|-----------|-----------|---------|
| GFS 80 STRE 21.3 | 350 | 1/2" | 21,3 x 2,6 | 22,0 | 16,0 | 13 | 35,0 | 38,1 | 54 | 17,5 | 46 | 16,0 | M 8 |
| GFS 100 STRE 26.9 | 350 | 3/4" | 26,9 x 2,6 | 28,0 | 21,5 | 19 | 35,0 | 47,6 | 65 | 22,2 | 50 | 18,0 | M 10 |
| GFS 102 STRE 33.7 | 315 | 1" | 33,7 x 3,2 | 35,0 | 27,0 | 25 | 38,0 | 52,4 | 70 | 26,2 | 55 | 18,0 | M 10 |
| GFS 104 STRE 42.4 | 250 | 1.1/4" | 42,4 x 3,2 | 43,0 | 36,0 | 31 | 41,0 | 58,7 | 79 | 30,2 | 68 | 21,0 | M 10 |
| GFS 106 STRE 48.3 | 200 | 1.1/2" | 48,3 x 3,2 | 49,0 | 42,0 | 38 | 44,0 | 69,9 | 93 | 35,7 | 78 | 25,0 | M 12 |
| GFS 108 STRE 48.3 | 200 | 2" | 48,3 x 3,2 | 49,0 | 42,0 | 42 | 45,0 | 77,8 | 102 | 42,9 | 90 | 25,0 | M 12 |
| GFS 108 STRE 60.3 | 200 | 2" | 60,3 x 3,6 | 61,0 | 53,0 | 49 | 45,0 | 77,8 | 102 | 42,9 | 90 | 25,0 | M 12 |
| GFS 110 STRE 60.3 | 160 | 2.1/2" | 60,3 x 3,6 | 61,0 | 53,0 | 53 | 50,0 | 88,9 | 114 | 50,8 | 105 | 25,0 | M 12 |
| GFS 110 STRE 76.1 | 160 | 2.1/2" | 76,1 x 3,6 | 77,0 | 70,0 | 62 | 50,0 | 88,9 | 114 | 50,8 | 105 | 25,0 | M 12 |
| GFS 112 STRE 88.9 | 138 | 3" | 88,9 x 3,6 | 90,0 | 82,0 | 74 | 51,0 | 106,4 | 134 | 61,9 | 124 | 26,0 | M 16 |
| GFS 114 STRE 76.1 | 35 | 3.1/2" | 76,1 x 3,6 | 77,0 | 70,0 | 70 | 48,0 | 120,7 | 152 | 69,9 | 136 | 26,0 | M 16 |
| GFS 114 STRE 88.9 | 35 | 3.1/2" | 88,9 x 3,6 | 90,0 | 82,0 | 82 | 48,0 | 120,7 | 152 | 69,9 | 136 | 26,0 | M 16 |
| GFS 116 STRE 114 | 35 | 4" | 114,3 x 3,6 | 115,0 | 107,0 | 102 | 48,0 | 130,2 | 162 | 77,8 | 146 | 26,0 | M 16 |
| GFS 116 STRE 88.9 | 35 | 4" | 88,9 x 3,6 | 90,0 | 82,0 | 82 | 48,0 | 130,2 | 162 | 77,8 | 146 | 26,0 | M 16 |
| GFS 118 STRE 139 | 35 | 5" | 139,7 x 4 | 140,2 | 131,0 | 120 | 50,0 | 152,4 | 184 | 92,1 | 180 | 28,0 | M 16 |

PN = nominalusis slėgis PB = maks. darbinis slėgis