

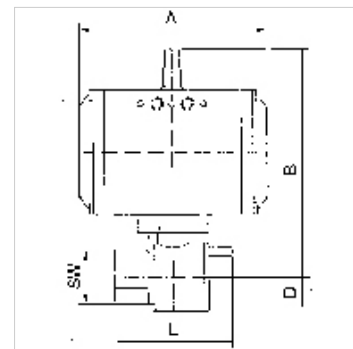
K-BKR STELLANTR E FEDER MS

Brass ball valves, single-acting actuator - spring to close

HANSA FLEX

Savybės

| | |
|------------------------------------|-------------------------------------------------------------------------------------------------|
| Konstrukcija | Pneumatic actuators, in double- or single acting version, with integrated end-position feedback |
| Darbinis slėgis | max. 40 bar (to DN 32); max. 25 bar (from DN 40); max. 16 bar (from DN 65) |
| Darbinė temperatūra | -20 °C to +70 °C |
| Sukimo kampas | 90 ° |
| Valdymo slėgis | 5.5 bar |
| Vožtuvo adapteris | Supplied as standard |
| Pavara | aluminium eloxed |
| Pavaros sandariklis | NBR |
| Rutulinis vožtuvas | Chrome-plated brass, with ISO-flange plate |
| Rutulinio vožtuvo tarpiklis | PTFE/FKM |
| Valdymas | |



Nuoroda

Daugiau duomenų pagal užklausimą.

Aprašas

2-way cock, full bore

Prekė

| Pavadinimas | DN | Sriegis | A (mm) | B (mm) | D (mm) | L (mm) | SW (mm) |
|----------------|----|----------|-----------|-----------|-----------|-----------|------------|
| K- 07 30 02 27 | 15 | Rp 1/2 | 133,0 | 142,0 | 17,0 | 75,0 | 26 |
| K- 07 30 02 28 | 20 | Rp 3/4 | 133,0 | 145,0 | 20,0 | 80,0 | 32 |
| K- 07 30 02 29 | 25 | Rp 1 | 133,0 | 148,0 | 25,0 | 90,0 | 41 |
| K- 07 30 02 30 | 32 | Rp 1 1/4 | 137,0 | 173,0 | 30,0 | 110,0 | 50 |
| K- 07 30 02 31 | 40 | Rp 1 1/2 | 137,0 | 180,0 | 36,0 | 120,0 | 55 |
| K- 07 30 02 32 | 50 | Rp 2 | 180,0 | 203,0 | 45,0 | 140,0 | 70 |
| K- 07 30 02 33 | 65 | Rp 2 1/2 | 209,0 | 230,0 | 57,0 | 155,0 | 83 |
| K- 07 30 02 34 | 80 | Rp 3 | 209,0 | 242,0 | 68,0 | 182,0 | 98 |