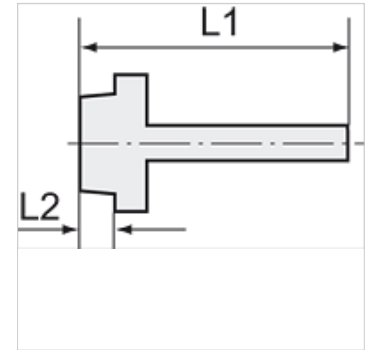
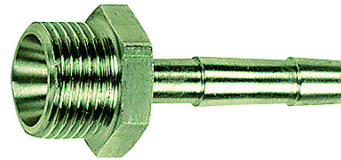


Savybės

Darbinis slėgis Max. 20 bar

Medžiaga nerūdijantis plienas 1.4571



Nuoroda

The dimensions of the standard screw fittings may change slightly during the life of the catalogue as a result of optimisation processes.

Daugiau duomenų pagal užklausimą.

Papildoma informacija

Further types and dimensions on request.

Prekė

Pavadinimas	Sriegis	žarnai	L1 (mm)	L2 (mm)	SW (rakto dydis)
K- 07 40 13 26	M 5	LW 4 mm	15,5	5,0	8 mm
K- 07 40 49 69	M 5	LW 6 mm	23,5	5,0	9 mm
K- 07 40 13 27	G 1/8	LW 4 mm	41,5	9,0	14 mm
K- 07 40 13 28	G 1/8	LW 6 mm	41,5	9,0	14 mm
K- 07 40 49 71	G 1/8	LW 8 mm	36,0	7,0	14 mm
K- 07 40 13 29	G 1/8	LW 9 mm	48,5	10,0	17 mm
K- 07 40 13 12	G 1/4	LW 4 mm	48,5	10,0	17 mm
K- 07 40 13 13	G 1/4	LW 6 mm	48,5	10,0	17 mm
K- 07 40 49 17	G 1/4	LW 8 mm	39,0	9,0	17 mm
K- 07 40 49 21	G 1/4	LW 10 mm	39,0	9,0	17 mm
K- 07 40 13 15	G 1/4	LW 9 mm	48,5	10,0	17 mm
K- 07 40 13 14	G 1/4	LW 13 mm	48,5	10,0	19 mm
K- 07 40 13 16	G 3/8	LW 4 mm	48,5	10,0	19 mm
K- 07 40 13 17	G 3/8	LW 6 mm	48,5	10,0	19 mm
K- 07 40 49 27	G 3/8	LW 8 mm	39,0	9,0	19 mm
K- 07 40 13 19	G 3/8	LW 9 mm	48,5	10,0	19 mm
K- 07 40 49 30	G 3/8	LW 10 mm	39,0	9,0	19 mm
K- 07 40 13 18	G 3/8	LW 13 mm	48,5	10,0	19 mm
K- 07 40 13 20	G 1/2	LW 6 mm	48,5	10,0	24 mm
K- 07 40 49 37	G 1/2	LW 8 mm	42,0	11,0	24 mm
K- 07 40 13 21	G 1/2	LW 9 mm	48,5	10,0	24 mm
K- 07 40 49 40	G 1/2	LW 10 mm	42,0	11,0	24 mm
K- 07 40 13 22	G 1/2	LW 13 mm	50,0	10,0	24 mm
K- 07 40 49 43	G 1/2	LW 16 mm	53,0	11,0	24 mm
K- 07 40 49 44	G 1/2	LW 19 mm	53,0	11,0	24 mm
K- 07 40 13 23	G 3/4	LW 9 mm	50,5	11,0	27 mm
K- 07 40 13 24	G 3/4	LW 13 mm	52,0	11,0	27 mm
K- 07 40 13 25	G 3/4	LW 19 mm	50,5	11,0	27 mm
K- 07 40 49 57	G 1	LW 19 mm	55,0	13,0	38 mm
K- 07 40 49 58	G 1	LW 25 mm	55,0	13,0	38 mm
K- 07 40 49 67	G 1	LW 32 mm	55,0	13,0	38 mm