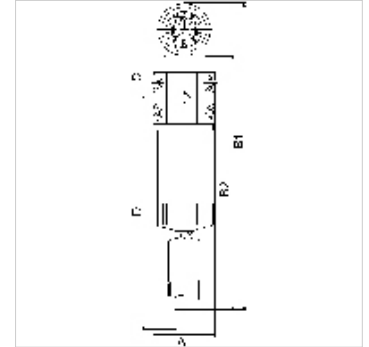


# K-VORFILTER M MANO

## Pre-filters with differential pressure gauge

### Savybės

Įėjimo slėgis	Min. 4 bar, Max. 16 bar
Diferencinio slėgio manometro indikatorių erdtis	0 - 2 bar
Korpusas, filtro rezervuaras	Aluminium
Aplinkos temperatūra	+5 °C to +60 °C
Filtravimo blokas	2,00 µm
Dalelių nusodinimas	2 µm
Naudingumo koeficientas	99.99 %
Filtro įdėklas	Polyethylene (with 45% cavity)
Srauto reikšmės matavimas	At P1 = 6 bar and pressure drop $\Delta p = 0.5\%$



### Nuoroda

Daugiau duomenų pagal užklausimą.

### Aprašas

Suitable for all applications where the standard centrifugal separators do not afford the desired efficiency. The pre-filters and micro-filters are equipped with an automatic drain valve. All devices can be supplied with or without a differential pressure gauge. The differential pressure gauge indicates the degree of contamination of the filter element as a function of the pressure drop.

### Prekė

Pavadinimas	Sriegis	Srautas (L/min)	A (mm)	B1 (mm)	B2 (mm)	C (mm)	D (mm)
K- 07 25 12 86	G 1/4	1000	82,5	407,0	335,0	57,0	353,0
K- 07 25 12 87	G 3/8	1000	82,5	407,0	335,0	57,0	353,0
K- 07 25 12 88	G 1/2	1000	82,5	407,0	335,0	57,0	353,0
K- 07 25 12 89	G 3/4	2000	82,5	477,0	405,0	57,0	493,0
K- 07 25 12 90	G 1	3000	118,0	492,0	420,0	72,0	458,0
K- 07 25 12 91	G 1 1/4	5300	118,0	592,0	520,0	72,0	658,0
K- 07 25 12 92	G 1 1/2	8300	118,0	692,0	620,0	72,0	858,0
K- 07 25 12 93	G 2	13000	118,0	882,0	810,0	72,0	1238,0

### Atsarginės dalys

K-FILTERELEMENT SONDER	Filter element
K-VERBINDUNGSELEMENTE SOND	Connecting sets
K-HALTERBAUSATZ	Holder
K-DIFFERENZDRUCKMANOMETER	Differential pressure gauge
K-AUTOMAT ABLASSVENTIL	Automatic drain valve