

# K-UEM MS NI

Hexagonal swivel nuts - nickel plated brass

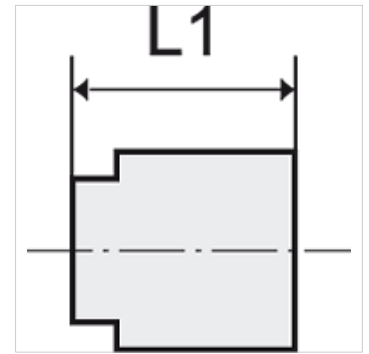
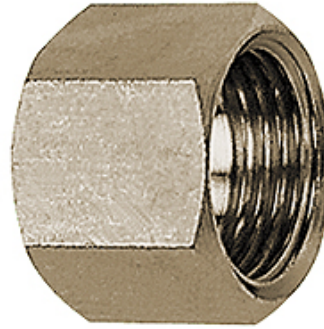
**HANSA FLEX**

## Savybės

Darbinė temperatūra Max. 150 °C

Slėgis Max. 60 bar

Medžiaga Žalvaris, nikeluotas



## Nuoroda

The dimensions of the standard screw fittings may change slightly during the life of the catalogue as a result of optimisation processes.

Daugiau duomenų pagal užklausimą.

## Aprašas

Suitable for air, water, oil, steam, etc.

## Papildoma informacija

Further types and dimensions on request.

## Prekė

Pavadinimas	Sriegis	Įvorės dydžiui	L1 (mm)	SW (rakto dydis)
K- 07 40 44 22	G 1/8	I.D. 4, I.D. 6	13,0	14 mm
K- 07 40 44 23	G 1/4	I.D. 4, I.D. 6	15,0	17 mm
K- 07 40 44 24	G 3/8	I.D. 9	15,0	19 mm
K- 07 40 44 25	G 1/2	I.D. 4, I.D. 6, I.D. 9	16,0	24 mm