

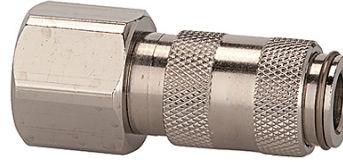
# K-SVKM NW 2,7 IG VA

Quick disconnect couplings DN 2.7, stainless steel 1.4404, female

**HANSA FLEX**

## Savybės

Darbinis slėgis	0 - 35 bar, maximum static working pressure (non-pulsating)
Oro srautas	165 l/min (at 6 bar and $\Delta p = 0.5$ bar)
Medžiagos temperatūra	-15 °C to +200 °C
Korpusas, mova, vožtuvo korpusas	Stainless steel 1.4404
Spyruoklė, spyruoklinis atraminis žiedas, rutuliai	Stainless steel 1.4404
Sandarinimo medžiaga	FKM



## Nuoroda

Daugiau duomenų pagal užklausimą.

## Aprašas

One-hand quick disconnect couplings, one side sealing, extremely compact with a large bore and only a small pressure drop. Ideal for: Medical equipment, chemical and pharmaceutical industry, laboratories, plant construction and butchers.

## Prekė

Pavadinimas	Jungtis	Ilgis (mm)	SW (mm)
K- 07 35 12 47	M 5 female	25,0	9
K- 07 35 12 48	G 1/8 female	28,0	12