

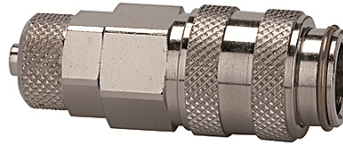
K-SVKM NW 5 SCHL MS NI1

Quick disconnect couplings DN 5, nickel-plated brass with hose connector

HANSA FLEX

Savybės

Darbinis slėgis	0 - 35 bar, maximum static working pressure (non-pulsating)
Oro srautas	560 l/min (at 6 bar and $\Delta p = 0.5$ bar)
Medžiagos temperatūra	-20 °C to +100 °C
Korpusas, mova, vožtuvo korpusas	Nickel-plated brass
Spyruoklė, spyruoklinis atraminis žiedas, rutuliai	Stainless steel
Sandarinimo medžiaga	NBR



Nuoroda

Daugiau duomenų pagal užklausimą.

Aprašas

One-hand quick disconnect couplings, one side sealing, compact with a large bore and only a small pressure drop. Ideal for: Pneumatic tools, pneumatic applications, medical equipment, instrumentation and control, laboratory, chemical applications, analysis, metering techniques.

Prekė

Pavadinimas	Jungtis	Ilgis (mm)	SW (mm)
K- 07 35 06 65	Hose connection 6 x 4	43,0	14
K- 07 35 06 66	Hose connection 8 x 6	43,0	14